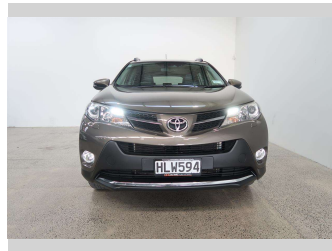


2014 Toyota RAV4 LTD



Purchase Price **\$23,990**
Includes GST, Registration & Licensing

Finance may be available on this vehicle. Ask one of our friendly staff for more information.

Gain peace of mind with Mechanical Breakdown Insurance. **Ask us how.**

- Top features**
- » ABS Braking
 - » Air Bag x 8
 - » Air Conditioning
 - » Auto Lights
 - » Bluetooth
 - » CD Player
 - » Central Locking
 - » Central Locking
 - » Child seat anchor poin...
 - » Cruise Control
 - » Dual Zone Climate Cont...
 - » Electric Mirrors
 - » Electric Mirrors (Retr...
 - » Factory Alloy Wheels
 - » Heated Seats
 - » Lane Departure Warning
 - » Leather Trim
 - » NZ Navigation

Body Style
5 door, SUV

Odometer
88,000 km

Engine
2500 cc, Internal Combustion

Fuel Type
Petrol

Transmission
Automatic, All Wheel Drive

Wheels
-

VIN
JTMDFREY10D070690

Interior
Black, Leather

Safety



Based on 2023 UCSR rating for 13-19 models

Reg No.
HLW594

Ext Colour
Brown

History
-

Seats
5 seats, Leather

CO2 Emissions
★ ★ ★ ☆ ☆ ☆
220 grams/km

Energy Economy
★ ☆ ☆ ☆ ☆ ☆

Annual fuel cost of \$3,720
9.5L per 100km

Cost per year is an estimate based on petrol price of \$2.80 per litre and an average distance of 14000 km. Emissions and Energy Economy figures standardised to 3P WLTP.

Stock ID: 4782



Paul Kelly Motor Company | Phone 03 377 8500 | Email 30@paulkelly.co.nz
30 Moorhouse Avenue, Addington, Christchurch 8011
www.paulkelly.co.nz