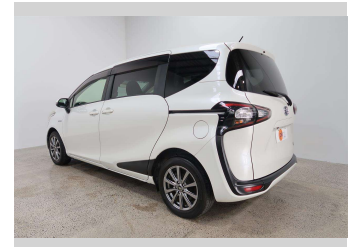
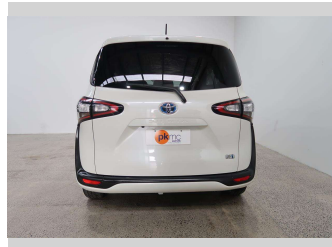
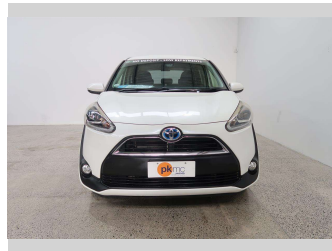


2016 Toyota Sienta HYBRID G



Purchase Price

\$15,990

Includes GST
Excludes on-road costs of \$550

Finance may be available on this vehicle. Ask one of our friendly staff for more information.

Gain peace of mind with Mechanical Breakdown Insurance. **Ask us how.**

Top features

- » Air Conditioning
- » Alloy Wheels
- » Anti Lock Braking Syst...
- » Auto Lights
- » CD Player
- » Central Locking
- » Central Locking
- » Child seat anchor poin...
- » Climate Control
- » Digital Display
- » Dual Zone Climate Cont...
- » Electric Mirrors (Retr...
- » ESC
- » EV Drive Mode
- » Face Lift Model
- » Fog Lights
- » Forward Accident Colli...
- » Heated Seats

Body Style

5 door, Station Wagon

Odometer

102,600 km

Engine

1500 cc

Fuel Type

Hybrid

Transmission

Automatic

Wheels

Custom Alloys

VIN

7AT0H64YX23061461

Interior

-

Safety



Based on 2023 VSRR rating

Reg No.

-

Ext Colour

Pearl

History

-

Seats

7 seats

CO2 Emissions

★★★★☆

107 grams/km

Energy Economy

★★★★☆

Annual fuel cost of \$1,800

4.6L per 100km

Cost per year is an estimate based on petrol price of \$2.80 per litre and an average distance of 14000 km. Emissions and Energy Economy figures standardised to 3P WLTP.

Stock ID: 4111



Paul Kelly Motor Company | Phone 03 377 8500 | Email 30@paulkelly.co.nz
30 Moorhouse Avenue, Addington, Christchurch 8011
www.paulkelly.co.nz