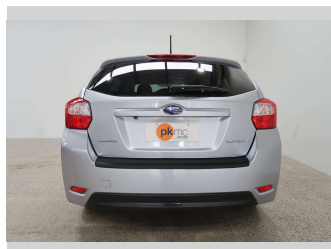
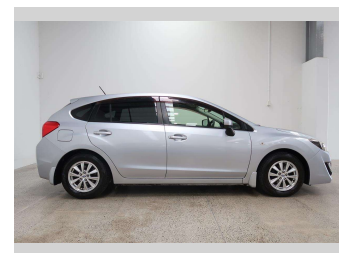


2015 Subaru Impreza 1.6I-L



Purchase Price **\$12,990**

Includes GST
Excludes on-road costs of \$550

Finance may be available on this vehicle. Ask one of our friendly staff for more information.

Gain peace of mind with Mechanical Breakdown Insurance. **Ask us how.**

- Top features**
- » 4 Wheel Drive
 - » ABS Braking
 - » Air Bag
 - » Air Conditioning
 - » Bluetooth
 - » CD Player
 - » Central Locking
 - » Central Locking
 - » Child seat anchor poin...
 - » Climate Control
 - » Electric Mirrors (Retr...
 - » Factory Alloy Wheels
 - » Power Steer
 - » Power Windows
 - » Push Button Start
 - » Radio
 - » Rear Wiper
 - » Remote Lock

Body Style
5 door, Hatchback

Odometer
93,914 km

Engine
1600 cc, Internal Combustion

Fuel Type
Petrol

Transmission
5-Speed Manual, All Wheel

Wheels
-

VIN
7AT0GF09X24019057

Interior
Black



Based on 2024 UCSR rating for 12-16 models

Reg No.
-

Ext Colour
Silver

History
-

Seats
5 seats, Cloth

CO2 Emissions
★★★★☆
169 grams/km

Energy Economy
★★★★☆☆

Annual fuel cost of \$2,820
7.2L per 100km

Cost per year is an estimate based on petrol price of \$2.80 per litre and an average distance of 14000 km. Emissions and Energy Economy figures standardised to 3P WLTP.

Stock ID: 4886