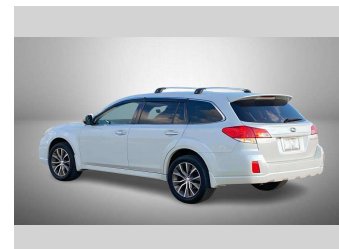
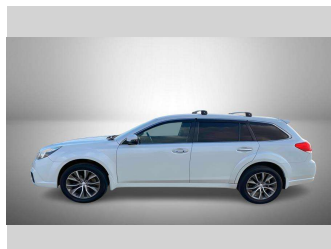
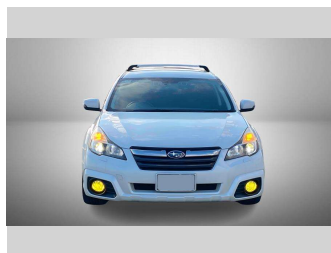


2012 Subaru Outback 2.5i S Package Leather



Purchase Price

\$11,990

Includes GST
Excludes on-road costs of \$550

Finance may be available on this vehicle. Ask one of our friendly staff for more information.

Gain peace of mind with Mechanical Breakdown Insurance. **Ask us how.**

Top features

- » Air Con
- » Auto Lights
- » CD Player
- » ESC
- » Heated Seats
- » Paddle Shift
- » Smart Key

Body Style

5 door, Station Wagon

Odometer

138,654 km

Engine

2500 cc, Internal Combustion

Fuel Type

Petrol

Transmission

Automatic, 4WD

Wheels

-

VIN

7AT0GF16X24008128

Interior

Black, Leather

Safety



Based on 2023 UCSR rating for 09-14 models

Reg No.

-

Ext Colour

Pearl

History

-

Seats

5 seats, Leather

CO2 Emissions

★★★★☆

190 grams/km

Energy Economy

★★☆☆☆☆

**Annual fuel cost of \$3,210
8.2L per 100km**

Cost per year is an estimate based on petrol price of \$2.80 per litre and an average distance of 14000 km. Emissions and Energy Economy figures standardised to 3P WLTP.

Stock ID: 4589



Paul Kelly Motor Company | Phone 03 377 8500 | Email 30@paulkelly.co.nz
30 Moorhouse Avenue, Addington, Christchurch 8011
www.paulkelly.co.nz