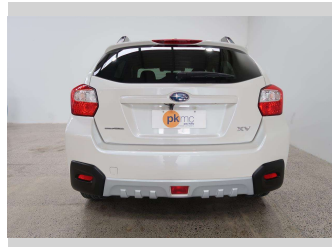
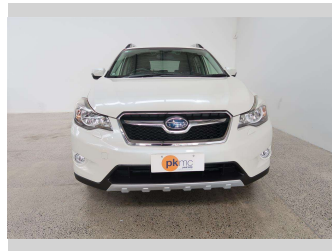


# 2014 Subaru XV 2.0I-L EYESIGHT 4WD



**Purchase Price** **\$13,990**

Includes GST  
Excludes on-road costs of \$550

Finance may be available on this vehicle. Ask one of our friendly staff for more information.

Gain peace of mind with Mechanical Breakdown Insurance. **Ask us how.**

- Top features**
- » 4 Wheel Drive
  - » ABS Braking
  - » Auto Lights
  - » Bluetooth
  - » Central Locking
  - » Central Locking
  - » Child seat anchor poin...
  - » Dual Zone Climate Cont...
  - » Electric Mirrors
  - » Electric Mirrors (Retr...
  - » Electronic Fuel Inject...
  - » Factory Alloy Wheels
  - » Paddle Shift
  - » Push Button Start
  - » Radar Cruise Control
  - » Rear Wiper
  - » Reversing Camera
  - » Roof Rails

Body Style  
**5 door, Station Wagon**

Odometer  
**133,000 km**

Engine  
**2000 cc, Internal Combustion**

Fuel Type  
**Petrol**

Transmission  
**Automatic**

Wheels  
-

VIN  
**7AT0GF1XX24065624**

Interior  
**Charcoal**



Based on 2023 UCSR rating for 12-16 models

Reg No.  
-

Ext Colour  
**Pearl**

History  
-

Seats  
**5 seats**

CO2 Emissions  
**★★★★☆**  
**163 grams/km**

Energy Economy  
**★★★☆☆**

**Annual fuel cost of \$2,740**  
**7L per 100km**

Cost per year is an estimate based on petrol price of \$2.80 per litre and an average distance of 14000 km. Emissions and Energy Economy figures standardised to 3P WLTP.

**Stock ID: 4593**



Paul Kelly Motor Company | Phone 03 377 8500 | Email 30@paulkelly.co.nz  
30 Moorhouse Avenue, Addington, Christchurch 8011  
www.paulkelly.co.nz