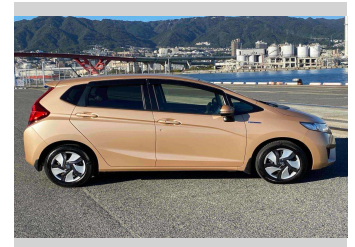


# 2014 Honda Fit HYBRID L PACKAGE



Purchase Price

**\$14,990**

Includes GST  
Excludes on-road costs of \$550

Finance may be available on this vehicle. Ask one of our friendly staff for more information.

Gain peace of mind with Mechanical Breakdown Insurance. **Ask us how.**

## Top features

» ESC

Body Style

**5 door, Hatchback**

Odometer

**53,827 km**

Engine

**1500 cc, Hybrid**

Fuel Type

**Hybrid**

Transmission

**Automatic, Front Wheel**

Wheels

-

VIN

**7AT08G2YX24079899**

Interior

**Black**

Safety



Based on 2024 UCSR rating for 14-20 models

Reg No.

-

Ext Colour

**Beige**

History

-

Seats

**Fabric**

CO2 Emissions

★★★★☆

**92 grams/km**

Energy Economy

★★★★☆☆

**Annual fuel cost of \$1,530  
3.9L per 100km**

Cost per year is an estimate based on petrol price of \$2.80 per litre and an average distance of 14000 km. Emissions and Energy Economy figures standardised to 3P WLTP.

**Stock ID: 4926**



Paul Kelly Motor Company | Phone 03 377 8500 | Email 30@paulkelly.co.nz  
30 Moorhouse Avenue, Addington, Christchurch 8011  
www.paulkelly.co.nz