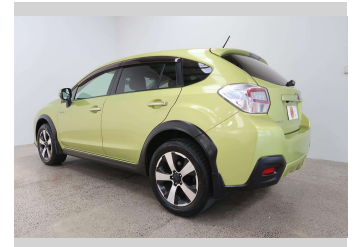
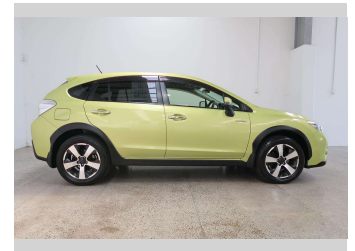
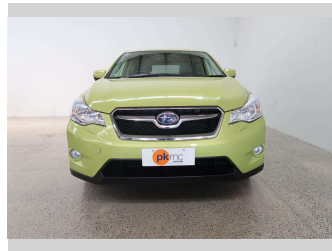
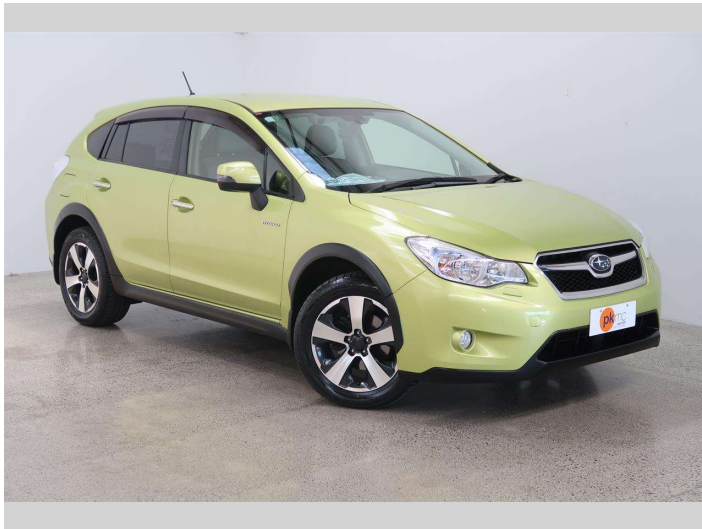


# 2013 Subaru XV HYBRID 2.0i-L 4WD



Purchase Price

**\$14,990**

Includes GST  
Excludes on-road costs of \$550

Finance may be available on this vehicle. Ask one of our friendly staff for more information.

Gain peace of mind with Mechanical Breakdown Insurance. **Ask us how.**

## Top features

- » 4 Wheel Drive
- » ABS Braking
- » Air Conditioning
- » Bluetooth
- » CD Player
- » Central Locking
- » Central Locking
- » Child seat anchor poin...
- » Climate Control
- » Electric Mirrors
- » Electric Mirrors (Retr...
- » Factory Alloy Wheels
- » Forward Collision Warn...
- » Lane Departure Warning
- » Lane Departure Warning
- » Paddle Shift
- » Power Steer
- » Power Windows

Body Style

**5 door, Station Wagon**

Odometer

**110,900 km**

Engine

**2000 cc, Hybrid**

Fuel Type

**Petrol**

Transmission

**Automatic, 4WD**

Wheels

-

VIN

**7AT0GF1XX24003113**

Interior

**Grey**

Safety



Based on 2024 UCSR rating for 12-16 models

Reg No.

-

Ext Colour

**Green**

History

-

Seats

**5 seats, Cloth**

CO2 Emissions

★★★★☆

**137 grams/km**

Energy Economy

★★★★☆☆

**Annual fuel cost of \$2,310**

**5.9L per 100km**

Cost per year is an estimate based on petrol price of \$2.80 per litre and an average distance of 14000 km. Emissions and Energy Economy figures standardised to 3P WLTP.

**Stock ID: 4862**



Paul Kelly Motor Company | Phone 03 377 8500 | Email 30@paulkelly.co.nz  
30 Moorhouse Avenue, Addington, Christchurch 8011  
www.paulkelly.co.nz