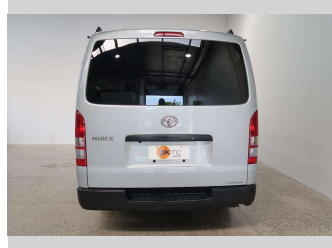
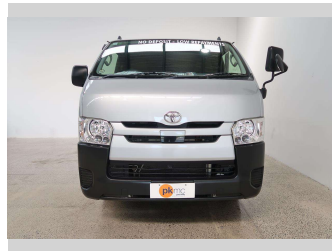


2017 Toyota Hiace DIESEL 4WD



Purchase Price **\$34,950**

Includes GST
Excludes on-road costs of \$550

Finance may be available on this vehicle. Ask one of our friendly staff for more information.

Gain peace of mind with Mechanical Breakdown Insurance. **Ask us how.**

- Top features**
- » 4 Wheel Drive
 - » Air Conditioning
 - » Anti Lock Braking Syst...
 - » Central Locking
 - » Central Locking
 - » Diesel
 - » Electric Mirrors
 - » Electric Mirrors
 - » Factory Alloy Wheels
 - » Power Steer
 - » Power Windows
 - » Radio
 - » Remote Lock
 - » Reversing Camera
 - » Roof Rack
 - » Traction Control
 - » Twin Airbags

Body Style
5 door, Van

Odometer
128,000 km

Engine
2800 cc

Fuel Type
Diesel


Transmission
Automatic, 4WD

Wheels
-

VIN
7AT0H60FX23001011

Interior
-

Safety



3 star
safety rating

Based on 2023 UCSR rating for 05-19 models

Reg No.
-

Ext Colour
Silver

History
-

Seats
3 seats

CO2 Emissions
★ ★ ★ ☆ ☆ ☆
233 grams/km

Energy Economy
★ ☆ ☆ ☆ ☆ ☆
Annual fuel cost of \$3,580
9L per 100km

Cost per year is an estimate based on diesel price of \$2.00 per litre and an average distance of 14000 km. Includes Road User Charges (RUC). Emissions and Energy Economy figures standardised to 3P WLTP.

Stock ID: 2300



Paul Kelly Motor Company - 4WD | Phone 03 365 9204 | Email 85@paulkelly.co.nz
85 Moorhouse Avenue, Addington, Christchurch 8011, New Zealand
www.paulkelly.co.nz