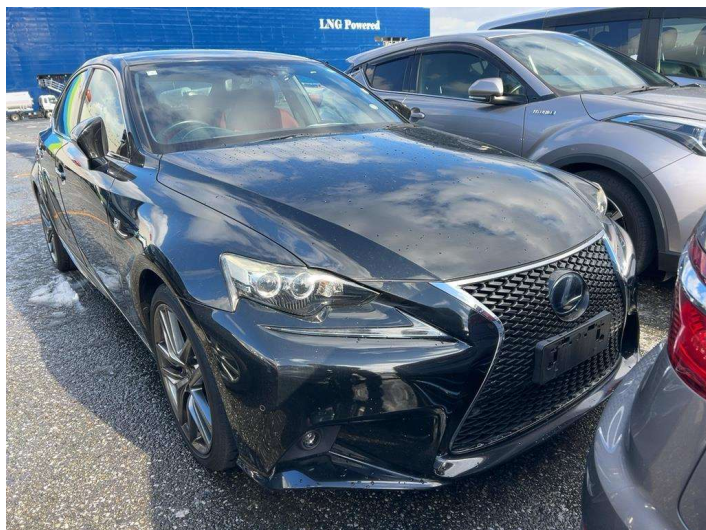


2013 Lexus IS 300H F Sport



Purchase Price **\$25,990**

Includes GST
Excludes on-road costs of \$550

Finance may be available on this vehicle. Ask one of our friendly staff for more information.

Gain peace of mind with Mechanical Breakdown Insurance. **Ask us how.**

Top features

None Listed

Body Style
Sedan

Odometer
131,000 km

Engine
2500 cc

Fuel Type
Hybrid

Transmission
Automatic

Wheels
-

VIN
-

Interior
-

Safety



Based on 2024 VSRR rating

Reg No.

-

Ext Colour
Black

History

-

Seats

-

CO2 Emissions

★★★★★☆☆

122 grams/km

Energy Economy

★★★★☆☆☆☆

**Annual fuel cost of \$2,040
5.2L per 100km**

Cost per year is an estimate based on petrol price of \$2.80 per litre and an average distance of 14000 km. Emissions and Energy Economy figures standardised to 3P WLTP.

Stock ID: 4992



Paul Kelly Motor Company | Phone 03 377 8500 | Email 30@paulkelly.co.nz
30 Moorhouse Avenue, Addington, Christchurch 8011
www.paulkelly.co.nz