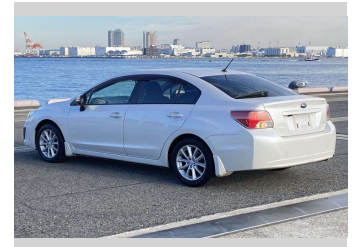
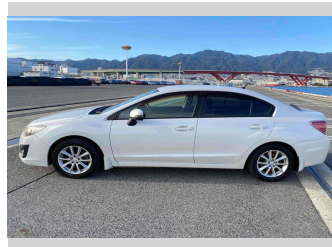
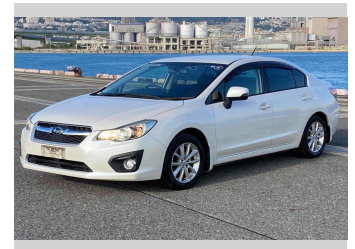
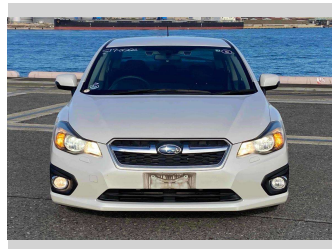
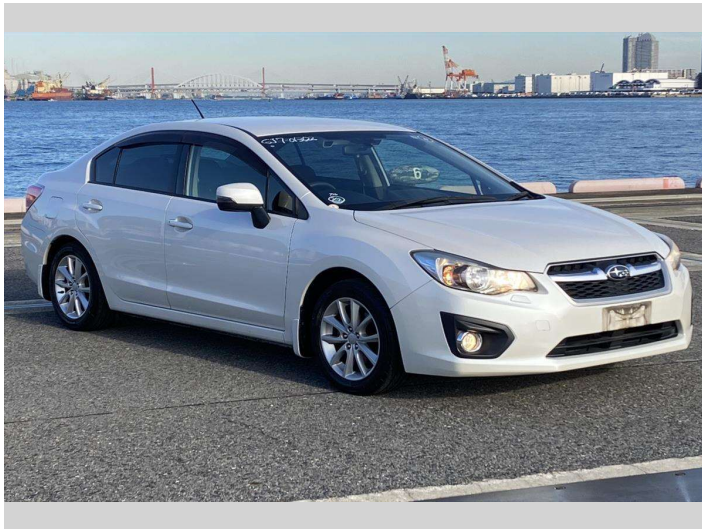


# 2013 Subaru IMPREZA G4 2.0i 4WD Eyesight



Purchase Price

**\$11,990**

Includes GST  
Excludes on-road costs of \$550

Finance may be available on this vehicle. Ask one of our friendly staff for more information.

Gain peace of mind with Mechanical Breakdown Insurance. **Ask us how.**

## Top features

- » Air Con
- » Auto Lights
- » ESC
- » Paddle Shift
- » Smart Key

Body Style

**4 door, Sedan**

Odometer

**92,180 km**

Engine

**2000 cc, Internal Combustion**

Fuel Type

**Petrol**

Transmission

**Automatic, 4WD**

Wheels

-

VIN

**7AT0GF09X24013622**

Interior

**Black**

Safety



Based on 2024 UCSR rating for 12-16 models

Reg No.

-

Ext Colour

**Pearl**

History

-

Seats

**5 seats, Cloth**

CO2 Emissions

★★★★☆

**163 grams/km**

Energy Economy

★★☆☆☆☆

**Annual fuel cost of \$2,740  
7L per 100km**

Cost per year is an estimate based on petrol price of \$2.80 per litre and an average distance of 14000 km. Emissions and Energy Economy figures standardised to 3P WLTP.

**Stock ID: 4927**



Paul Kelly Motor Company | Phone 03 377 8500 | Email 30@paulkelly.co.nz  
30 Moorhouse Avenue, Addington, Christchurch 8011  
www.paulkelly.co.nz