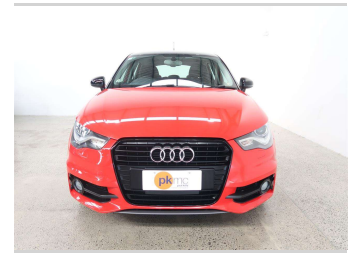
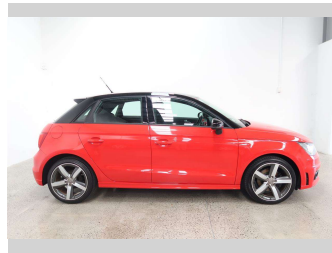


# 2014 Audi A1 ADO MIRE -DO2LTD



**Purchase Price** **\$15,990**

Includes GST  
Excludes on-road costs of \$550

Finance may be available on this vehicle. Ask one of our friendly staff for more information.

Gain peace of mind with Mechanical Breakdown Insurance. **Ask us how.**

- Top features**
- » ABS Braking
  - » Air Bag x 6
  - » Air Conditioning
  - » Bluetooth
  - » CD Player
  - » Central Locking
  - » Central Locking
  - » Child seat anchor poin...
  - » Climate Control
  - » Electric Mirrors (Retr...
  - » ESC
  - » Factory Alloy Wheels
  - » Power Steer
  - » Power Windows
  - » Push Button Start
  - » Radio
  - » Rear Wiper
  - » Remote Lock

Body Style  
**5 door, Hatchback**

Odometer  
**47,000 km**

Engine  
**1400 cc, Internal Combustion**

Fuel Type  
**Petrol**

Transmission  
**Automatic, Front Wheel**

Wheels  
-

VIN  
**WAUZZZ8X7EB141224**

Interior  
**Charcoal**



Based on 2024 UCSR rating for 10-19 models

Reg No.  
-

Ext Colour  
**red-2tone**

History  
-

Seats  
**5 seats, Cloth**

CO2 Emissions  
**★★★★☆**  
**151 grams/km**

Energy Economy  
**★★★★☆☆**

**Annual fuel cost of \$2,550**  
**6.5L per 100km**

Cost per year is an estimate based on petrol price of \$2.80 per litre and an average distance of 14000 km. Emissions and Energy Economy figures standardised to 3P WLTP.

**Stock ID: 5002**



Paul Kelly Motor Company | Phone 03 377 8500 | Email 30@paulkelly.co.nz  
30 Moorhouse Avenue, Addington, Christchurch 8011  
www.paulkelly.co.nz