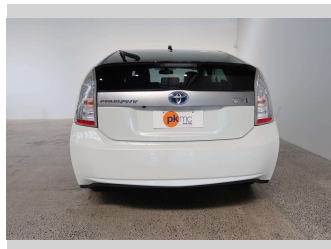
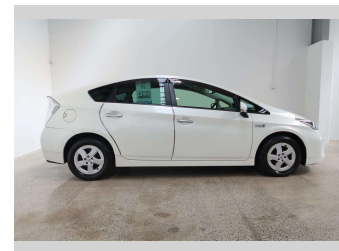
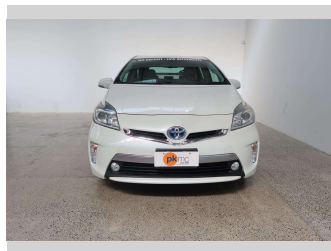


2012 Toyota Prius G PHEV LEA



Purchase Price **\$14,950**

Includes GST
Excludes on-road costs of \$550

Finance may be available on this vehicle. Ask one of our friendly staff for more information.

Gain peace of mind with Mechanical Breakdown Insurance. **Ask us how.**

- Top features**
- » Air Bag x 8
 - » Air Conditioning
 - » Anti Lock Braking Syst...
 - » Auto Lights
 - » CD Player
 - » Central Locking
 - » Central Locking
 - » Child seat anchor poin...
 - » Climate Control
 - » Cruise Control
 - » Day Time Lighting
 - » Electric Mirrors (Retr...
 - » Factory Alloy Wheels
 - » Fog Lights
 - » Heated Seats
 - » Leather Trim
 - » Parking Sensors
 - » Power Steer

Body Style
Sedan

Odometer
67,156 km

Engine
1800 cc

Fuel Type
Hybrid

Transmission
Automatic

Wheels
Factory Alloys

VIN
7AT0H637X23001422

Interior
-

Safety



Based on 2023 UCSR rating for 09-16 models

Reg No.
-

Ext Colour
Pearl

History
-

Seats
5 seats

CO2 Emissions
★★★★☆
59 grams/km

Energy Economy
★★★★☆
Annual fuel cost not available
2.6L per 100km

Actual figures and cost per year will vary based on proportion of hybrid mode driving and battery charging schedule. Emissions and Energy Economy figures standardised to 3P WLTP.

Stock ID: 4414



Paul Kelly Motor Company | Phone 03 377 8500 | Email 30@paulkelly.co.nz
30 Moorhouse Avenue, Addington, Christchurch 8011
www.paulkelly.co.nz