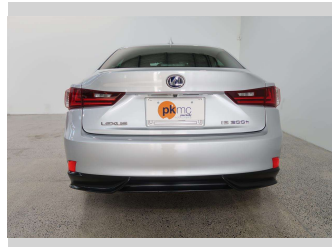
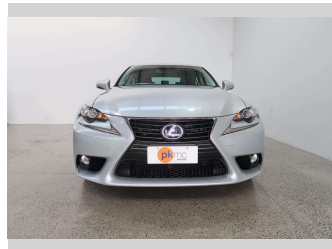


2014 Lexus IS 300H



Purchase Price

\$22,950

Includes GST
Excludes on-road costs of \$550

Finance may be available on this vehicle. Ask one of our friendly staff for more information.

Gain peace of mind with Mechanical Breakdown Insurance. **Ask us how.**

Top features

- » Air Bag x 8
- » Air Conditioning
- » Anti Lock Braking Syst...
- » Auto Lights
- » Bluetooth
- » CD Player
- » Central Locking
- » Central Locking
- » Child seat anchor poin...
- » Climate Control
- » Cruise Control
- » Day Time Lighting
- » Digital Display
- » Dual Zone Climate Cont...
- » Electric Mirrors
- » Electric Mirrors (Retr...
- » EV Drive Mode
- » Face Lift Model

Body Style

4 door, Sedan

Odometer

97,920 km

Engine

2500 cc

Fuel Type

Hybrid

Transmission

Automatic, Rear Wheel

Wheels

Factory Alloys

VIN

7AT0B013X23027155

Interior

Black

Safety



Based on 2023 VSRR rating

Reg No.

-

Ext Colour

Silver

History

-

Seats

5 seats, Half Leather / Cloth

CO2 Emissions

★★★★☆

122 grams/km

Energy Economy

★★★★☆☆

Annual fuel cost of \$2,040

5.2L per 100km

Cost per year is an estimate based on petrol price of \$2.80 per litre and an average distance of 14000 km. Emissions and Energy Economy figures standardised to 3P WLTP.

Stock ID: 3961



Paul Kelly Motor Company | Phone 03 377 8500 | Email 30@paulkelly.co.nz
30 Moorhouse Avenue, Addington, Christchurch 8011
www.paulkelly.co.nz