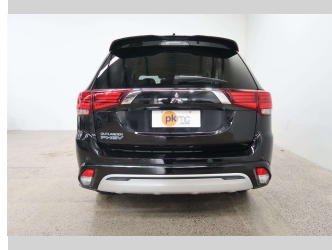
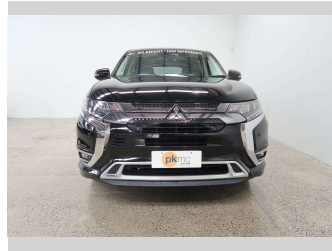


2018 Mitsubishi Outlander PHEV 4WD G



Purchase Price

\$29,950

Includes GST
Excludes on-road costs of \$550

Finance may be available on this vehicle. Ask one of our friendly staff for more information.

Gain peace of mind with Mechanical Breakdown Insurance. **Ask us how.**

Top features

- » 4 Wheel Drive
- » Air Bag x 6
- » Air Conditioning
- » Anti Lock Braking Syst...
- » Central Locking
- » Central Locking
- » Child seat anchor poin...
- » Climate Control
- » Cruise Control
- » Electric Mirrors (Retr...
- » EV Drive Mode
- » Factory Alloy Wheels
- » Heated Seats
- » Leather Trim
- » Parking Sensors
- » Power Steer
- » Power Windows
- » Push Button Start

Body Style

5 door, SUV / 4x4

Odometer

71,800 km

Engine

2400 cc, Plug-In Hybrid

Fuel Type

Hybrid

Transmission

Automatic, 4WD

Wheels

-

VIN

7AT0CJ3MX23602641

Interior

Black

Safety



Based on 2023 UCSR rating for 12-21 models

Reg No.

-

Ext Colour

Black

History

-

Seats

5 seats, Half Leather / Cloth

CO2 Emissions

★★★★☆

42 grams/km

Energy Economy

★★★★☆☆

**Annual fuel cost not available
6.2L per 100km**

Actual figures and cost per year will vary based on proportion of hybrid mode driving and battery charging schedule. Emissions and Energy Economy figures standardised to 3P WLTP.

Stock ID: 2454



Paul Kelly Motor Company | Phone 03 377 8500 | Email 30@paulkelly.co.nz
30 Moorhouse Avenue, Addington, Christchurch 8011
www.paulkelly.co.nz