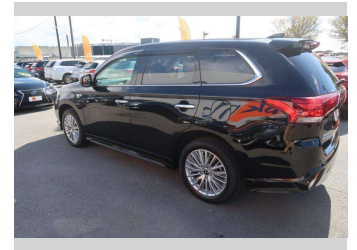
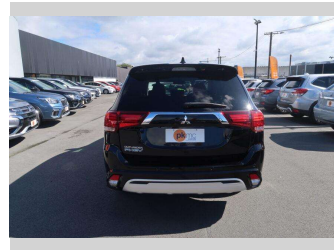
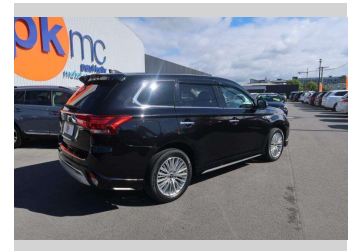


2018 Mitsubishi Outlander PHEV 4WD G



Purchase Price **\$29,950**

Includes GST
Excludes on-road costs of \$550

Finance may be available on this vehicle. Ask one of our friendly staff for more information.

Gain peace of mind with Mechanical Breakdown Insurance. **Ask us how.**

- Top features**
- » 4 Wheel Drive
 - » Air Bag x 6
 - » Air Conditioning
 - » Anti Lock Braking Syst...
 - » Central Locking
 - » Central Locking
 - » Child seat anchor poin...
 - » Climate Control
 - » Cruise Control
 - » Electric Mirrors (Retr...
 - » EV Drive Mode
 - » Factory Alloy Wheels
 - » Heated Seats
 - » Leather Trim
 - » Parking Sensors
 - » Power Steer
 - » Power Windows
 - » Push Button Start

Body Style
5 door, SUV / 4x4

Odometer
70,431 km

Engine
2400 cc

Fuel Type
Hybrid

Transmission
Automatic, 4WD

Wheels
-

VIN
7AT0CJ3MX23602641

Interior
Black

Safety



Based on 2023 UCSR rating for 12-21 models

Reg No.
-

Ext Colour
Black

History
-

Seats
5 seats, Half Leather / Cloth

CO2 Emissions
★★★★☆
42 grams/km

Energy Economy
★★★★☆☆
Annual fuel cost not available
6.2L per 100km

Actual figures and cost per year will vary based on proportion of hybrid mode driving and battery charging schedule. Emissions and Energy Economy figures standardised to 3P WLTP.

Stock ID: 2454



Paul Kelly Motor Company - 4WD | Phone 03 365 9204 | Email 85@paulkelly.co.nz
85 Moorhouse Avenue, Addington, Christchurch 8011, New Zealand
www.paulkelly.co.nz