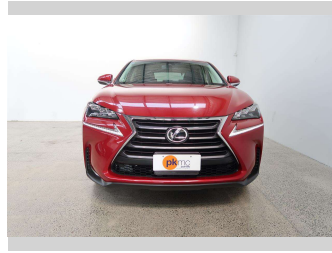


# 2014 Lexus NX 200T



Purchase Price

**\$27,990**

Includes GST  
Excludes on-road costs of \$550

Finance may be available on this vehicle. Ask one of our friendly staff for more information.

Gain peace of mind with Mechanical Breakdown Insurance. **Ask us how.**

## Top features

- » ABS Braking
- » Air Bag x 4
- » Air Conditioning
- » Auto Lights
- » Bluetooth
- » CD Player
- » Child seat anchor poin...
- » Climate Control
- » Cruise Control
- » Day Time Lighting
- » Electric Mirrors
- » EV Drive Mode
- » Lane Departure Warning
- » Lane Departure Warning
- » Leather Trim
- » Power Steer
- » Power Windows
- » Push Button Start

Body Style

**5 door, SUV**

Odometer

**100,814 km**

Engine

**2000 cc**

Fuel Type

**Petrol**

Transmission

**Automatic**

Wheels

-

VIN

**7AT0B01EX24002088**

Interior

**Black & White**

Safety



Based on 2023 UCSR rating for 14-21 models

Reg No.

-

Ext Colour

**Red**

History

-

Seats

**5 seats, Leather**

CO2 Emissions

★★★★☆

**200 grams/km**

Energy Economy

★★☆☆☆☆

**Annual fuel cost of \$3,370**

**8.6L per 100km**

Cost per year is an estimate based on petrol price of \$2.80 per litre and an average distance of 14000 km. Emissions and Energy Economy figures standardised to 3P WLTP.

**Stock ID: 4647**



Paul Kelly Motor Company | Phone 03 377 8500 | Email 30@paulkelly.co.nz  
30 Moorhouse Avenue, Addington, Christchurch 8011  
www.paulkelly.co.nz