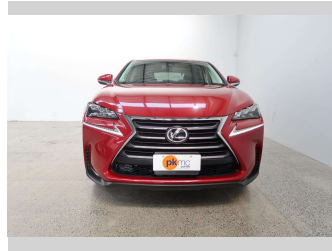


2014 Lexus NX 200T



Purchase Price

\$29,990

Includes GST
Excludes on-road costs of \$550

Finance may be available on this vehicle. Ask one of our friendly staff for more information.

Gain peace of mind with Mechanical Breakdown Insurance. **Ask us how.**

Top features

- » ABS Braking
- » Air Bag x 4
- » Air Conditioning
- » Auto Lights
- » Bluetooth
- » CD Player
- » Child seat anchor poin...
- » Climate Control
- » Cruise Control
- » Day Time Lighting
- » Electric Mirrors
- » EV Drive Mode
- » Lane Departure Warning
- » Lane Departure Warning
- » Leather Trim
- » Power Steer
- » Power Windows
- » Push Button Start

Body Style

5 door, SUV

Odometer

100,814 km

Engine

2000 cc

Fuel Type

Petrol

Transmission

Automatic

Wheels

-

VIN

7AT0B01EX24002088

Interior

Black & White

Safety



Based on 2023 UCSR rating for 14-21 models

Reg No.

-

Ext Colour

Red

History

-

Seats

5 seats, Leather

CO2 Emissions

★★★★☆

200 grams/km

Energy Economy

★★☆☆☆☆

Annual fuel cost of \$3,370

8.6L per 100km

Cost per year is an estimate based on petrol price of \$2.80 per litre and an average distance of 14000 km. Emissions and Energy Economy figures standardised to 3P WLTP.

Stock ID: 4647



Paul Kelly Motor Company - 4WD | Phone 03 365 9204 | Email 85@paulkelly.co.nz
85 Moorhouse Avenue, Addington, Christchurch 8011, New Zealand
www.paulkelly.co.nz