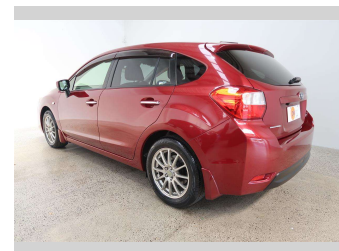
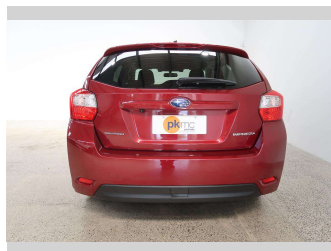
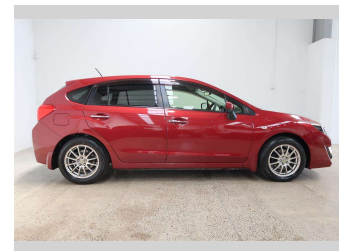
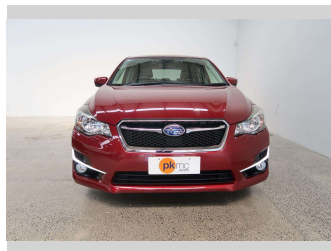


2016 Subaru Impreza 1.6I SPORT



Purchase Price

\$11,990

Includes GST
Excludes on-road costs of \$550

Finance may be available on this vehicle. Ask one of our friendly staff for more information.

Gain peace of mind with Mechanical Breakdown Insurance. **Ask us how.**

Top features

- » 4 Wheel Drive
- » ABS Braking
- » Air Conditioning
- » Alloy Wheels
- » Bluetooth
- » CD Player
- » Central Locking
- » Central Locking
- » Child seat anchor poin...
- » Electric Mirrors (Retr...
- » ESC
- » Forward Collision Warn...
- » Lane Departure Warning
- » Lane Departure Warning
- » Paddle Shift
- » Power Steer
- » Power Windows
- » Push Button Start

Body Style

5 door, Hatchback

Odometer

123,644 km

Engine

1600 cc, Internal Combustion

Fuel Type

Petrol

Transmission

Automatic, All Wheel Drive

Wheels

-

VIN

7AT0GF09X24026011

Interior

Charcoal

Safety



Based on 2023 UCSR rating for 12-16 models

Reg No.

-

Ext Colour

Red

History

-

Seats

5 seats, Fabric

CO2 Emissions

★★★★☆

167 grams/km

Energy Economy

★★★☆☆

Annual fuel cost of \$2,780

7.1L per 100km

Cost per year is an estimate based on petrol price of \$2.80 per litre and an average distance of 14000 km. Emissions and Energy Economy figures standardised to 3P WLTP.

Stock ID: 4744



Paul Kelly Motor Company | Phone 03 377 8500 | Email 30@paulkelly.co.nz
30 Moorhouse Avenue, Addington, Christchurch 8011
www.paulkelly.co.nz