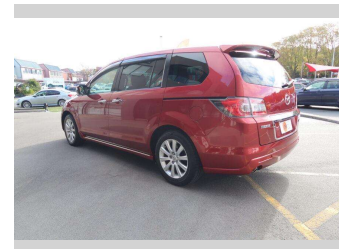
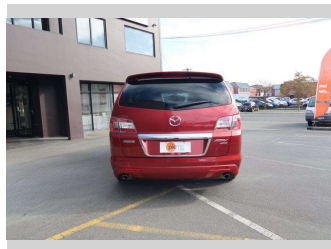
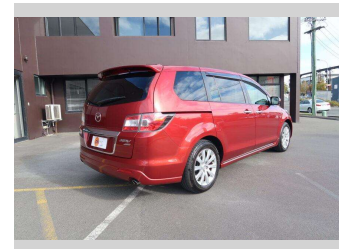
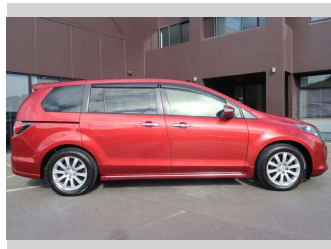


2016 Mazda MPV 23S 4WD



Purchase Price **\$16,990**

Includes GST
Excludes on-road costs of \$550

Finance may be available on this vehicle. Ask one of our friendly staff for more information.

Gain peace of mind with Mechanical Breakdown Insurance. **Ask us how.**

- Top features**
- » 7 Seater
 - » Air Conditioning
 - » Alloy Wheels
 - » Anti Lock Braking Syst...
 - » Central Locking
 - » Central Locking
 - » Child seat anchor poin...
 - » Climate Control
 - » Dual Zone Climate Cont...
 - » Electric Mirrors
 - » Factory Alloy Wheels
 - » Fog Lights
 - » Power Steer
 - » Power Windows
 - » Radio
 - » Rear Wiper
 - » Remote Lock
 - » Reversing Camera

Body Style
5 door, Station Wagon

Odometer
106,410 km

Engine
2300 cc, Internal Combustion

Fuel Type
Petrol

Transmission
Automatic, All Wheel Drive

Wheels
-

VIN
7AT0C11EX24303593

Interior
Black, Cloth

Safety



Based on 2023 VSRR rating

Reg No.
-

Ext Colour
Red

History
-

Seats
7 seats, Cloth

CO2 Emissions
★ ★ ☆ ☆ ☆ ☆ ☆
250 grams/km

Energy Economy
★ ☆ ☆ ☆ ☆ ☆ ☆

Annual fuel cost of \$4,190
10.7L per 100km

Cost per year is an estimate based on petrol price of \$2.80 per litre and an average distance of 14000 km. Emissions and Energy Economy figures standardised to 3P WLTP.

Stock ID: 4368



Paul Kelly Motor Company | Phone 03 377 8500 | Email 30@paulkelly.co.nz
30 Moorhouse Avenue, Addington, Christchurch 8011
www.paulkelly.co.nz