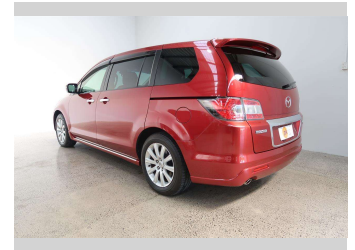
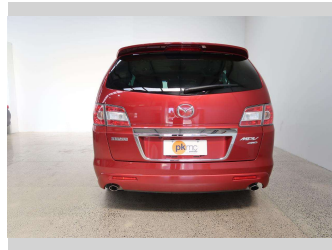
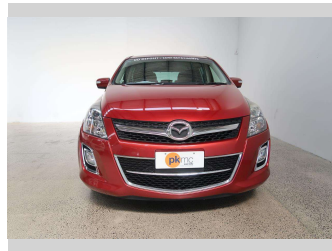


2016 Mazda MPV 23S 4WD



Purchase Price

\$15,990

Includes GST
Excludes on-road costs of \$550

Finance may be available on this vehicle. Ask one of our friendly staff for more information.

Gain peace of mind with Mechanical Breakdown Insurance. **Ask us how.**

Top features

- » 7 Seater
- » Air Conditioning
- » Alloy Wheels
- » Anti Lock Braking Syst...
- » Central Locking
- » Central Locking
- » Child seat anchor poin...
- » Climate Control
- » Dual Zone Climate Cont...
- » Electric Mirrors
- » Factory Alloy Wheels
- » Fog Lights
- » Power Steer
- » Power Windows
- » Radio
- » Rear Wiper
- » Remote Lock
- » Reversing Camera

Body Style

5 door, Station Wagon

Odometer

106,410 km

Engine

2300 cc, Internal Combustion

Fuel Type

Petrol

Transmission

Automatic, All Wheel Drive

Wheels

-

VIN

7AT0C11EX24303593

Interior

Black, Cloth

Safety



Based on 2023 VSRR rating

Reg No.

-

Ext Colour

Red

History

-

Seats

7 seats, Cloth

CO2 Emissions

★ ★ ☆ ☆ ☆ ☆ ☆

250 grams/km

Energy Economy

★ ☆ ☆ ☆ ☆ ☆ ☆

Annual fuel cost of \$4,190

10.7L per 100km

Cost per year is an estimate based on petrol price of \$2.80 per litre and an average distance of 14000 km. Emissions and Energy Economy figures standardised to 3P WLTP.

Stock ID: 4368



Paul Kelly Motor Company | Phone 03 377 8500 | Email 30@paulkelly.co.nz
30 Moorhouse Avenue, Addington, Christchurch 8011
www.paulkelly.co.nz