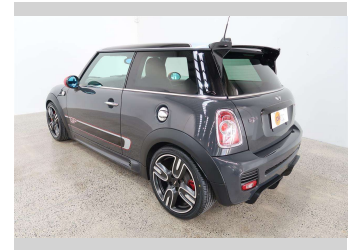
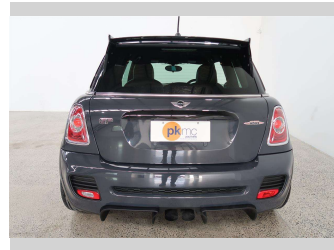
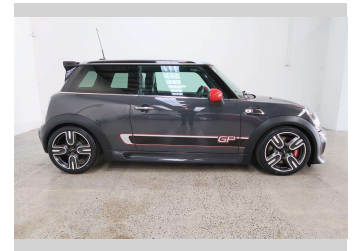
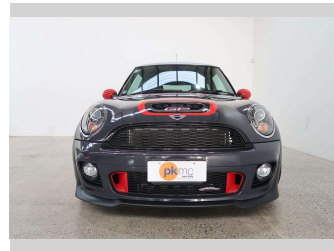


2013 Mini Cooper GP2



Purchase Price

\$34,990

Includes GST, Registration & Licensing

Finance may be available on this vehicle. Ask one of our friendly staff for more information.

Gain peace of mind with Mechanical Breakdown Insurance. **Ask us how.**

Top features

- » Air Bag x 10
- » Air Conditioning
- » Alloy Wheels
- » Anti Lock Braking Syst...
- » Body Kit (Factory)
- » CD Player
- » Central Locking
- » Central Locking
- » Climate Control
- » Electric Mirrors
- » Electronic Fuel Inject...
- » Factory Alloy Wheels
- » Fog Lights
- » Heated Seats
- » Power Steer
- » Power Windows
- » Push Button Start
- » Radio

Body Style

3 door, Hatchback

Odometer

119,757 km

Engine

1600 cc, Internal Combustion

Fuel Type

Petrol

Transmission

6-Speed Manual

Wheels

Factory Alloys

VIN

WMWSU92090T379087

Interior

Black, Leather / Alcantara

Safety



Based on 2023 VSRR rating

Reg No.

QSJ444

Ext Colour

Grey

History

-

Seats

2 seats, Leather / Alcantara

CO2 Emissions

★★★★☆

181 grams/km

Energy Economy

★★☆☆☆☆

Annual fuel cost of \$3,060

7.8L per 100km

Cost per year is an estimate based on petrol price of \$2.80 per litre and an average distance of 14000 km. Emissions and Energy Economy figures standardised to 3P WLTP.

Stock ID: 4840



Paul Kelly Motor Company | Phone 03 377 8500 | Email 30@paulkelly.co.nz
30 Moorhouse Avenue, Addington, Christchurch 8011
www.paulkelly.co.nz