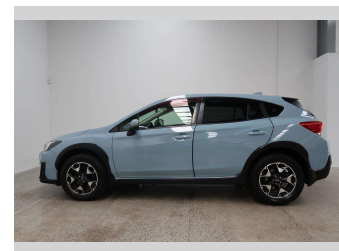
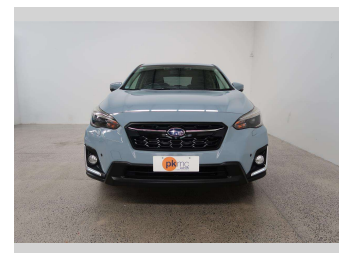
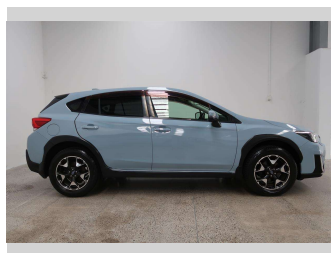


2017 Subaru XV 2.0i-L eyesight



Purchase Price **\$19,990**

Includes GST
Excludes on-road costs of \$550

Finance may be available on this vehicle. Ask one of our friendly staff for more information.

Gain peace of mind with Mechanical Breakdown Insurance. **Ask us how.**

- Top features**
- » 4 Wheel Drive
 - » ABS Braking
 - » Air Bag x 6
 - » Air Conditioning
 - » Auto Lights
 - » Bluetooth
 - » CD Player
 - » Central Locking
 - » Central Locking
 - » Child seat anchor poin...
 - » Climate Control
 - » Electric Mirrors (Retr...
 - » ESC
 - » Factory Alloy Wheels
 - » Forward Collision Warn...
 - » Lane Departure Warning
 - » Paddle Shift
 - » Parking Sensors

Body Style
5 door, Station Wagon

Odometer
96,733 km

Engine
2000 cc, Internal Combustion

Fuel Type
Petrol

Transmission
Automatic, 4WD

Wheels
-

VIN
7AT0GF1XX24049354

Interior
Grey

Safety



Based on 2024 UCSR rating for 16-22 models

Reg No.
-

Ext Colour
light blue

History
-

Seats
5 seats, Cloth

CO2 Emissions
★★★★☆
162 grams/km

Energy Economy
★★☆☆☆☆
Annual fuel cost of \$2,700
6.9L per 100km

Cost per year is an estimate based on petrol price of \$2.80 per litre and an average distance of 14000 km. Emissions and Energy Economy figures standardised to 3P WLTP.

Stock ID: 4933



Paul Kelly Motor Company | Phone 03 377 8500 | Email 30@paulkelly.co.nz
30 Moorhouse Avenue, Addington, Christchurch 8011
www.paulkelly.co.nz