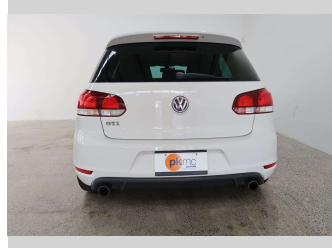
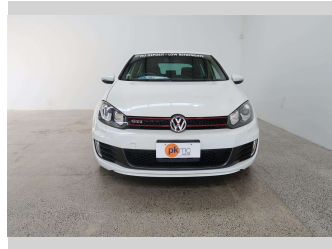


# 2010 Volkswagen Golf GTI



Purchase Price

**\$15,990**

Includes GST  
Excludes on-road costs of \$550

Finance may be available on this vehicle. Ask one of our friendly staff for more information.

Gain peace of mind with Mechanical Breakdown Insurance. **Ask us how.**

## Top features

- » Air Bag x 12
- » Air Conditioning
- » CD Player
- » Central Locking
- » Climate Control
- » Cruise Control
- » Electric Mirrors (Retr...)
- » Factory Alloy Wheels
- » Fog Lights
- » Power Steer
- » Power Windows
- » Radio
- » Rear Wiper
- » Side Skirts
- » Spoiler
- » Turbo

Body Style

**5 door, Hatchback**

Odometer

**64,400 km**

Engine

**2000 cc, Internal Combustion**

Fuel Type

**Petrol**

Transmission

**Automatic**

Wheels

**Factory Alloys**

VIN

**WVWZZZ1KZBW103602**

Interior

-

Safety



Based on 2023 UCSR rating for 10-13 models

Reg No.

-

Ext Colour

**White**

History

-

Seats

**5 seats**

CO2 Emissions

★★★★☆

**207 grams/km**

Energy Economy

★★★★☆

**Annual fuel cost of \$3,490**

**8.9L per 100km**

Cost per year is an estimate based on petrol price of \$2.80 per litre and an average distance of 14000 km. Emissions and Energy Economy figures standardised to 3P WLTP.

**Stock ID: 4525**



Paul Kelly Motor Company | Phone 03 377 8500 | Email 30@paulkelly.co.nz  
30 Moorhouse Avenue, Addington, Christchurch 8011  
www.paulkelly.co.nz