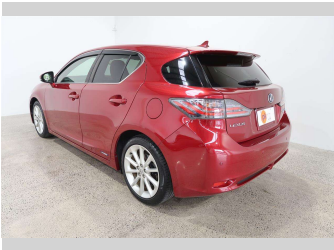
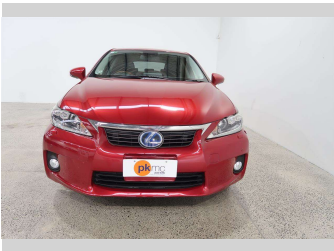


2013 Lexus CT200H VER-L



Purchase Price

\$19,990

Includes GST
Excludes on-road costs of \$550

Finance may be available on this vehicle. Ask one of our friendly staff for more information.

Gain peace of mind with Mechanical Breakdown Insurance. **Ask us how.**

Top features

- » Air Bag x 10
- » Air Conditioning
- » Anti Lock Braking Syst...
- » Auto High Beam
- » Auto Lights
- » Bluetooth
- » CD Player
- » Central Locking
- » Central Locking
- » Child seat anchor poin...
- » Cruise Control
- » Day Time Lighting
- » Digital Display
- » Dual Zone Climate Cont...
- » Electric Mirrors (Retr...
- » ESC
- » EV Drive Mode
- » Face Lift Model

Body Style

5 door, Hatchback

Odometer

66,110 km

Engine

1800 cc, Hybrid

Fuel Type

Petrol

Transmission

Automatic, Front Wheel

Wheels

Factory Alloys

VIN

7AT0B010X24144436

Interior

Black, Leather

Safety



Based on 2023 VSRR rating

Reg No.

-

Ext Colour

Red

History

-

Seats

5 seats, Leather

CO2 Emissions

★★★★☆

109 grams/km

Energy Economy

★★★★☆☆

**Annual fuel cost of \$1,840
4.7L per 100km**

Cost per year is an estimate based on petrol price of \$2.80 per litre and an average distance of 14000 km. Emissions and Energy Economy figures standardised to 3P WLTP.

Stock ID: 4515



Paul Kelly Motor Company | Phone 03 377 8500 | Email 30@paulkelly.co.nz
30 Moorhouse Avenue, Addington, Christchurch 8011
www.paulkelly.co.nz