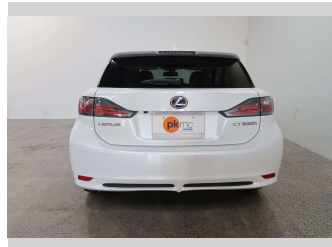
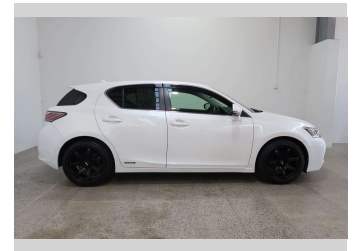
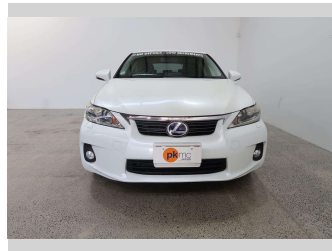


2011 Lexus CT200H VERISON G



Purchase Price **\$15,990**

Includes GST
Excludes on-road costs of \$550

Finance may be available on this vehicle. Ask one of our friendly staff for more information.

Gain peace of mind with Mechanical Breakdown Insurance. **Ask us how.**

- Top features**
- » Air Bag x 6
 - » Air Conditioning
 - » Alloy Wheels
 - » Anti Lock Braking Syst...
 - » Central Locking
 - » Central Locking
 - » Climate Control
 - » Cruise Control
 - » Electric Mirrors
 - » Heated Seats
 - » Parking Sensors
 - » Power Steer
 - » Power Windows
 - » Push Button Start
 - » Radio
 - » Rear Wiper
 - » Reversing Camera
 - » Smart Key

Body Style
5 door, Hatchback

Odometer
94,000 km

Engine
1800 cc, Hybrid

Fuel Type
Hybrid

Transmission
Automatic

Wheels
-

VIN
7AT0B010X23045352

Interior
Black

Safety



Based on 2023 VSRR rating

Reg No.

-

Ext Colour

Pearl

History

-

Seats

5 seats, Fabric

CO2 Emissions

★★★★☆

109 grams/km

Energy Economy

★★★★☆☆

**Annual fuel cost of \$1,840
4.7L per 100km**

Cost per year is an estimate based on petrol price of \$2.80 per litre and an average distance of 14000 km. Emissions and Energy Economy figures standardised to 3P WLTP.

Stock ID: 4267



Paul Kelly Motor Company | Phone 03 377 8500 | Email 30@paulkelly.co.nz
30 Moorhouse Avenue, Addington, Christchurch 8011
www.paulkelly.co.nz