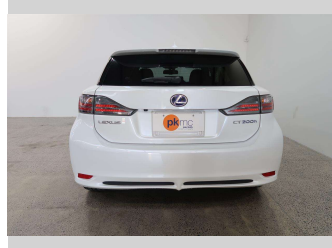
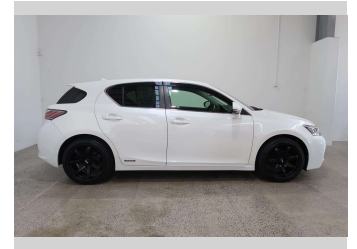
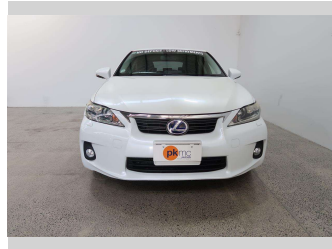


# 2011 Lexus CT200H VERISON G



**Purchase Price** **\$15,990**

Includes GST  
Excludes on-road costs of \$550

Finance may be available on this vehicle. Ask one of our friendly staff for more information.

Gain peace of mind with Mechanical Breakdown Insurance. **Ask us how.**

- Top features**
- » Air Bag x 6
  - » Air Conditioning
  - » Alloy Wheels
  - » Anti Lock Braking Syst...
  - » Central Locking
  - » Central Locking
  - » Climate Control
  - » Cruise Control
  - » Electric Mirrors
  - » Heated Seats
  - » Parking Sensors
  - » Power Steer
  - » Power Windows
  - » Push Button Start
  - » Radio
  - » Rear Wiper
  - » Reversing Camera
  - » Smart Key

Body Style  
**5 door, Hatchback**

Odometer  
**94,000 km**

Engine  
**1800 cc, Hybrid**

Fuel Type  
**Hybrid**

Transmission  
**Automatic**

Wheels  
-

VIN  
**7AT0B010X23045352**

Interior  
**Black**

Safety



Based on 2023 VSRR rating

Reg No.

-

Ext Colour

**Pearl**

History

-

Seats

**5 seats, Fabric**

CO2 Emissions

★★★★☆

**109 grams/km**

Energy Economy

★★★★☆☆

**Annual fuel cost of \$1,840  
4.7L per 100km**

Cost per year is an estimate based on petrol price of \$2.80 per litre and an average distance of 14000 km. Emissions and Energy Economy figures standardised to 3P WLTP.

**Stock ID: 4267**



Paul Kelly Motor Company | Phone 03 377 8500 | Email 30@paulkelly.co.nz  
30 Moorhouse Avenue, Addington, Christchurch 8011  
www.paulkelly.co.nz