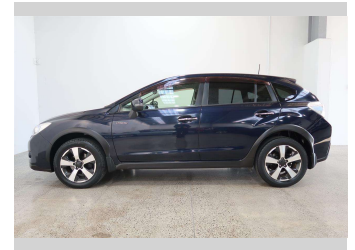
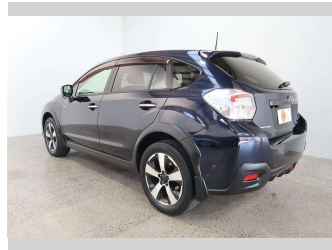
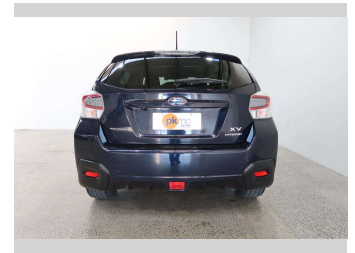
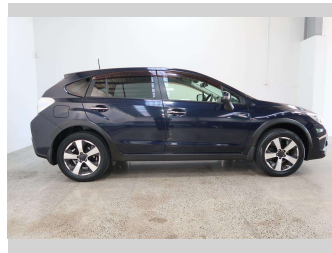


# 2014 Subaru XV 2.0I-L 4WD



Purchase Price

**\$15,990**

Includes GST  
Excludes on-road costs of \$550

Finance may be available on this vehicle. Ask one of our friendly staff for more information.

Gain peace of mind with Mechanical Breakdown Insurance. **Ask us how.**

## Top features

- » Air Bag
- » Air Conditioning
- » Anti Lock Braking Syst...
- » Auto Lights
- » CD Player
- » Central Locking
- » Central Locking
- » Child seat anchor poin...
- » Climate Control
- » Cruise Control
- » Electric Mirrors (Retr...
- » Factory Alloy Wheels
- » Fog Lights
- » Forward Collision Warn...
- » Lane Departure Warning
- » Paddle Shift
- » Power Steer
- » Power Windows

Body Style

**5 door, SUV / 4x4**

Odometer

**114,400 km**

Engine

**2000 cc**

Fuel Type

**Hybrid**

Transmission

**Automatic, All Wheel Drive**

Wheels

**Factory Alloys**

VIN

**7AT0GF09X24011463**

Interior

-

Safety



Based on 2023 UCSR rating for 12-16 models

Reg No.

-

Ext Colour

**Blue**

History

-

Seats

**5 seats**

CO2 Emissions

★★★★☆

**137 grams/km**

Energy Economy

★★★★☆☆

**Annual fuel cost of \$2,310**

**5.9L per 100km**

Cost per year is an estimate based on petrol price of \$2.80 per litre and an average distance of 14000 km. Emissions and Energy Economy figures standardised to 3P WLTP.

**Stock ID: 4571**



Paul Kelly Motor Company | Phone 03 377 8500 | Email 30@paulkelly.co.nz  
30 Moorhouse Avenue, Addington, Christchurch 8011  
www.paulkelly.co.nz