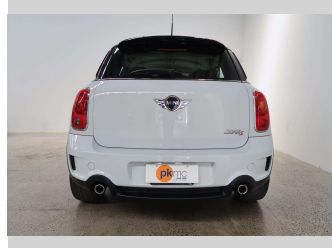
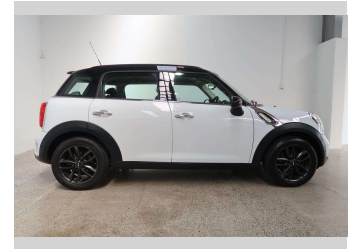
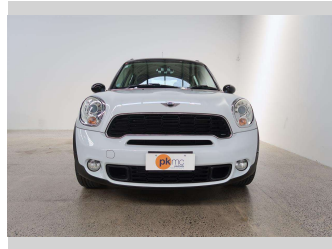


2012 Mini Cooper S Crossover



Purchase Price **\$14,990**

Includes GST
Excludes on-road costs of \$550

Finance may be available on this vehicle. Ask one of our friendly staff for more information.

Gain peace of mind with Mechanical Breakdown Insurance. **Ask us how.**

- Top features**
- » ABS Braking
 - » Air Bag x 4
 - » Air Conditioning
 - » Bluetooth
 - » CD Player
 - » Central Locking
 - » Central Locking
 - » Child seat anchor poin...
 - » Climate Control
 - » Electric Mirrors
 - » Electric Mirrors (Retr...
 - » ESC
 - » Factory Alloy Wheels
 - » Paddle Shift
 - » Power Steer
 - » Power Windows
 - » Push Button Start
 - » Radio

Body Style
5 door, Hatchback

Odometer
81,625 km

Engine
1600 cc, Internal Combustion

Fuel Type
Petrol

Transmission
Automatic

Wheels
-

VIN
WMWZC32000WM21563

Interior
Charcoal

Safety



Based on 2023 VSRR rating

Reg No.
-

Ext Colour
White

History
-

Seats
4 seats, Cloth

CO2 Emissions
★★★★☆
186 grams/km

Energy Economy
★★☆☆☆☆

Annual fuel cost of \$3,100
7.9L per 100km

Cost per year is an estimate based on petrol price of \$2.80 per litre and an average distance of 14000 km. Emissions and Energy Economy figures standardised to 3P WLTP.

Stock ID: 4683



Paul Kelly Motor Company | Phone 03 377 8500 | Email 30@paulkelly.co.nz
30 Moorhouse Avenue, Addington, Christchurch 8011
www.paulkelly.co.nz