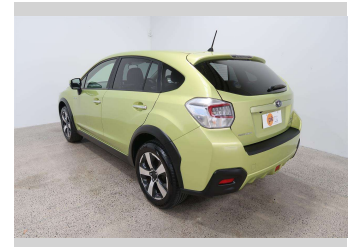
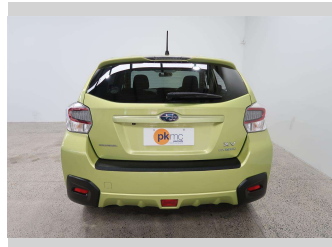
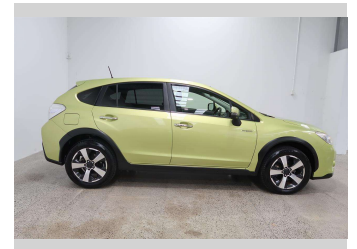
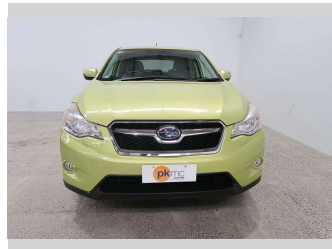


2013 Subaru XV HYBRID 2.0i-L 4WD



Purchase Price **\$14,990**

Includes GST
Excludes on-road costs of \$550

Finance may be available on this vehicle. Ask one of our friendly staff for more information.

Gain peace of mind with Mechanical Breakdown Insurance. **Ask us how.**

- Top features**
- » 4 Wheel Drive
 - » ABS Braking
 - » Air Conditioning
 - » Bluetooth
 - » CD Player
 - » Central Locking
 - » Central Locking
 - » Child seat anchor poin...
 - » Cruise Control
 - » Electric Mirrors (Retr...
 - » Factory Alloy Wheels
 - » Paddle Shift
 - » Power Steer
 - » Power Windows
 - » Push Button Start
 - » Radio
 - » Rear Wiper
 - » Remote Lock

Body Style
5 door, Station Wagon

Odometer
107,000 km

Engine
2000 cc, Hybrid

Fuel Type
Hybrid

Transmission
Automatic

Wheels
-

VIN
7AT0GF1XX24002412

Interior
Charcoal

Safety



Based on 2023 UCSR rating for 12-16 models

Reg No.
-

Ext Colour
Green

History
-

Seats
5 seats, Cloth

CO2 Emissions
★★★★☆
137 grams/km

Energy Economy
★★★★☆☆

Annual fuel cost of \$2,310
5.9L per 100km

Cost per year is an estimate based on petrol price of \$2.80 per litre and an average distance of 14000 km. Emissions and Energy Economy figures standardised to 3P WLTP.

Stock ID: 4661



Paul Kelly Motor Company | Phone 03 377 8500 | Email 30@paulkelly.co.nz
30 Moorhouse Avenue, Addington, Christchurch 8011
www.paulkelly.co.nz