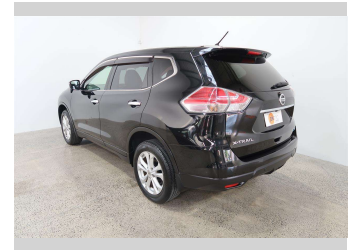
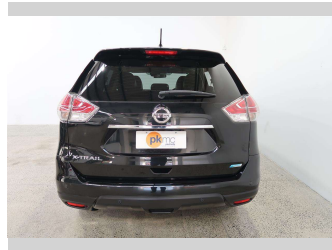
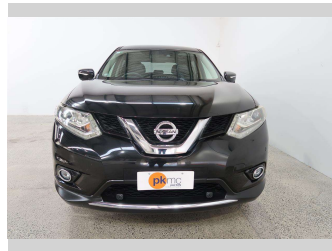


2015 Nissan X-TRAIL 20X FACELI



Purchase Price **\$17,990**

Includes GST
Excludes on-road costs of \$550

Finance may be available on this vehicle. Ask one of our friendly staff for more information.

Gain peace of mind with Mechanical Breakdown Insurance. **Ask us how.**

- Top features**
- » ABS Braking
 - » Air Conditioning
 - » Bluetooth
 - » CD Player
 - » Central Locking
 - » Central Locking
 - » Child seat anchor poin...
 - » Climate Control
 - » Electric Mirrors (Retr...
 - » Factory Alloy Wheels
 - » Heated Seats
 - » Parking Sensors
 - » Power Steer
 - » Power Windows
 - » Push Button Start
 - » Radio
 - » Rear Wiper
 - » Remote Lock

Body Style
5 door, SUV

Odometer
82,000 km

Engine
2000 cc, Internal Combustion

Fuel Type
Petrol

Transmission
Automatic

Wheels
-

VIN
7AT0DH6LX24505086

Interior
Black

Safety



Based on 2023 UCSR rating for 14-21 models

Reg No.
-

Ext Colour
Black

History
-

Seats
5 seats, Leather

CO2 Emissions
★★★★☆
162 grams/km

Energy Economy
★★★☆☆☆☆

Annual fuel cost of \$2,700
6.9L per 100km

Cost per year is an estimate based on petrol price of \$2.80 per litre and an average distance of 14000 km. Emissions and Energy Economy figures standardised to 3P WLTP.

Stock ID: 4630



Paul Kelly Motor Company - 4WD | Phone 03 365 9204 | Email 85@paulkelly.co.nz
85 Moorhouse Avenue, Addington, Christchurch 8011, New Zealand
www.paulkelly.co.nz