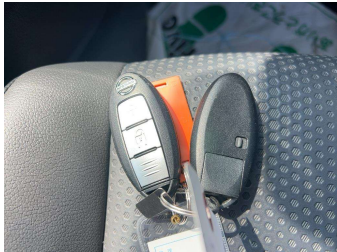
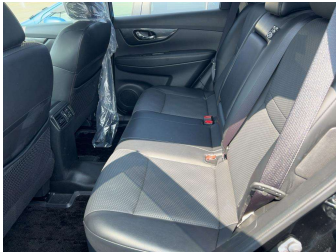


# 2015 Nissan X-TRAIL ST-L



## Purchase Price

Includes GST  
Excludes on-road costs of \$550

**\$17,990**

Finance may be available on this vehicle. Ask one of our friendly staff for more information.

Gain peace of mind with Mechanical Breakdown Insurance. **Ask us how.**

## Top features

None Listed

Body Style

**5 door, SUV**

Odometer

**82,000 km**

Engine

**2000 cc, Internal Combustion**

Fuel Type

**Petrol**

Transmission

**Automatic**

Wheels

-

VIN

**7AT0DH6LX24505086**

Interior

**Black**

Safety



Based on 2023 UCSR rating for 14-21 models

Reg No.

-

Ext Colour

**Black**

History

-

Seats

**5 seats**

CO2 Emissions

**★★★★☆**

**162 grams/km**

Energy Economy

**★★★★☆☆**

**Annual fuel cost of \$2,700  
6.9L per 100km**

Cost per year is an estimate based on petrol price of \$2.80 per litre and an average distance of 14000 km. Emissions and Energy Economy figures standardised to 3P WLTP.

**Stock ID: 4630**



Paul Kelly Motor Company - 4WD | Phone 03 365 9204 | Email 85@paulkelly.co.nz  
85 Moorhouse Avenue, Addington, Christchurch 8011, New Zealand  
www.paulkelly.co.nz