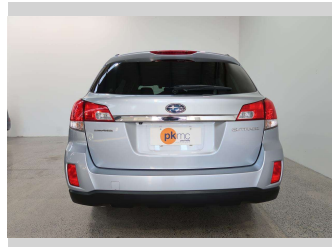
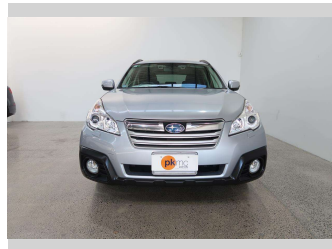


2012 Subaru Outback



Purchase Price **\$11,990**

Includes GST
Excludes on-road costs of \$550

Finance may be available on this vehicle. Ask one of our friendly staff for more information.

Gain peace of mind with Mechanical Breakdown Insurance. **Ask us how.**

- Top features**
- » 4 Wheel Drive
 - » Air Bag x 6
 - » Air Conditioning
 - » Alloy Wheels
 - » Anti Lock Braking Syst...
 - » Auto Lights
 - » Bluetooth
 - » CD Player
 - » Central Locking
 - » Central Locking
 - » Child seat anchor poin...
 - » Climate Control
 - » Cruise Control
 - » Digital Display
 - » Dual Zone Climate Cont...
 - » Electric Mirrors
 - » Electric Mirrors (Retr...
 - » ESC

Body Style
Station Wagon

Odometer
125,516 km

Engine
2500 cc, Internal Combustion

Fuel Type
Petrol

Transmission
Automatic, 4WD

Wheels
-

VIN
7AT0GF16X24010218

Interior
Charcoal

Safety



Based on 2023 UCSR rating for 09-14 models

Reg No.
-

Ext Colour
Silver

History
Ex-Overseas

Seats
5 seats

CO2 Emissions
★ ★ ★ ★ ☆ ☆
190 grams/km

Energy Economy
★ ★ ☆ ☆ ☆ ☆

Annual fuel cost of \$3,210
8.2L per 100km

Cost per year is an estimate based on petrol price of \$2.80 per litre and an average distance of 14000 km. Emissions and Energy Economy figures standardised to 3P WLTP.

Stock ID: 4622



Paul Kelly Motor Company | Phone 03 377 8500 | Email 30@paulkelly.co.nz
30 Moorhouse Avenue, Addington, Christchurch 8011
www.paulkelly.co.nz