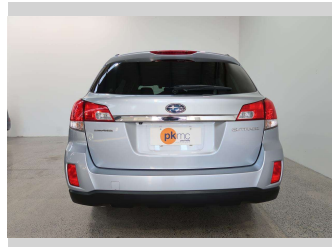
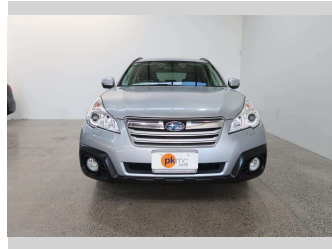


2012 Subaru Outback



Purchase Price

\$11,990

Includes GST
Excludes on-road costs of \$550

Finance may be available on this vehicle. Ask one of our friendly staff for more information.

Gain peace of mind with Mechanical Breakdown Insurance. **Ask us how.**

Top features

- » 4 Wheel Drive
- » Air Bag x 6
- » Air Conditioning
- » Alloy Wheels
- » Anti Lock Braking Syst...
- » Auto Lights
- » Bluetooth
- » CD Player
- » Central Locking
- » Central Locking
- » Child seat anchor poin...
- » Climate Control
- » Cruise Control
- » Digital Display
- » Dual Zone Climate Cont...
- » Electric Mirrors
- » Electric Mirrors (Retr...
- » ESC

Body Style

Station Wagon

Odometer

125,516 km

Engine

2500 cc, Internal Combustion

Fuel Type

Petrol

Transmission

Automatic, 4WD

Wheels

-

VIN

7AT0GF16X24010218

Interior

Charcoal

Safety



Based on 2023 UCSR rating
for 09-14 models

Reg No.

-

Ext Colour

Silver

History

Ex-Overseas

Seats

5 seats

CO2 Emissions

★★★★☆☆

190 grams/km

Energy Economy

★★★★☆☆

Annual fuel cost of \$3,210
8.2L per 100km

Cost per year is an estimate based on petrol price of \$2.80 per litre and an average distance of 14000 km. Emissions and Energy Economy figures standardised to 3P WLTP.

Stock ID: 4622



Paul Kelly Motor Company | Phone 03 377 8500 | Email 30@paulkelly.co.nz
30 Moorhouse Avenue, Addington, Christchurch 8011
www.paulkelly.co.nz