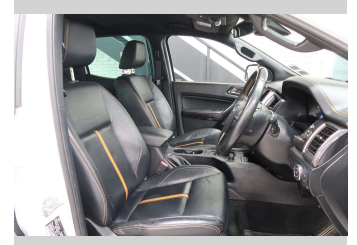
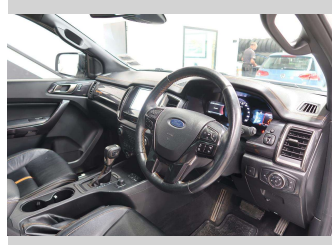
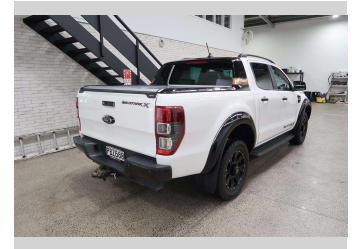
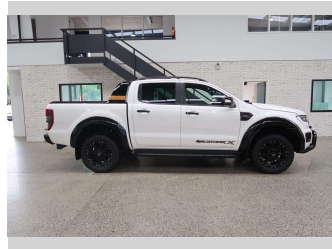


2022 Ford Ranger WILDTRAK X



Purchase Price

\$48,990

Includes GST, Registration & Licensing

Finance may be available on this vehicle. Ask one of our friendly staff for more information.

Gain peace of mind with Mechanical Breakdown Insurance. **Ask us how.**

Top features

- » 4 Wheel Drive
- » Air Bag x 6
- » Alloy Wheels
- » Anti Lock Braking Syst...
- » Apple CarPlay
- » Auto Lights
- » Bluetooth
- » Central Locking
- » Child seat anchor poin...
- » Day Time Lighting
- » Dual Zone Climate Cont...
- » Electric Mirrors
- » Electric Mirrors
- » ESC
- » Factory Alloy Wheels
- » Forward Collision Warn...
- » Heated Seats
- » Lane Departure Warning

Body Style

4 door, Ute

Odometer

92,670 km

Engine

1996 cc, Internal Combustion

Fuel Type

Diesel

Transmission

Automatic, 4WD

Wheels

-

VIN

MPBUMFF60MX372004

Interior

Black

Safety



Based on 2024 VSRR rating

Reg No.

PBZ680

Ext Colour

White

History

-

Seats

5 seats, Leather

CO2 Emissions

★★★★☆☆

225 grams/km

Energy Economy

★★★★☆☆

Annual fuel cost of \$3,440

8.5L per 100km

Cost per year is an estimate based on diesel price of \$2.00 per litre and an average distance of 14000 km. Includes Road User Charges (RUC). Emissions and Energy Economy figures standardised to 3P WLTP.

Stock ID: 4962



Paul Kelly Motor Company | Phone 03 377 8500 | Email 30@paulkelly.co.nz
30 Moorhouse Avenue, Addington, Christchurch 8011
www.paulkelly.co.nz