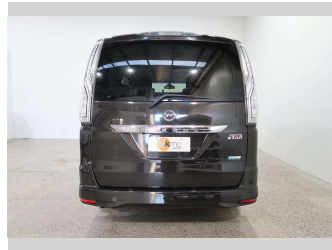
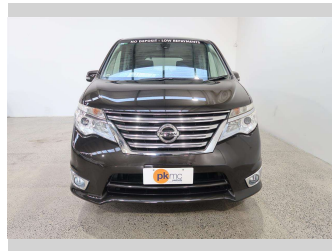


# 2014 Nissan Serena HIGHWAY ST



**Purchase Price** **\$12,990**

Includes GST  
Excludes on-road costs of \$550

Finance may be available on this vehicle. Ask one of our friendly staff for more information.

Gain peace of mind with Mechanical Breakdown Insurance. **Ask us how.**

- Top features**
- » 8 Seater
  - » Air Conditioning
  - » Alloy Wheels
  - » Anti Lock Braking Syst...
  - » Body Kit (Factory)
  - » Central Locking
  - » Central Locking
  - » Child seat anchor poin...
  - » Climate Control
  - » Cruise Control
  - » Digital Display
  - » Electric Mirrors
  - » Electric Mirrors (Retr...
  - » Factory Alloy Wheels
  - » Power Steer
  - » Power Windows
  - » Radio
  - » Rear Wiper

Body Style  
**5 door, Van**

Odometer  
**116,340 km**

Engine  
**2000 cc, Hybrid**

Fuel Type  
**Hybrid**

Transmission  
**Automatic, Front Wheel**

Wheels  
-

VIN  
**7AT0DH3FX24228153**

Interior  
**Black, Cloth**

Safety



Based on 2023 VSRR rating

Reg No.  
-

Ext Colour  
**Brown**

History  
-

Seats  
**7 seats**

CO2 Emissions  
**★★★★☆**  
**171 grams/km**

Energy Economy  
**★★☆☆☆**  
**Annual fuel cost of \$2,860**  
**7.3L per 100km**

Cost per year is an estimate based on petrol price of \$2.80 per litre and an average distance of 14000 km. Emissions and Energy Economy figures standardised to 3P WLTP.

**Stock ID: 4351**



Paul Kelly Motor Company | Phone 03 377 8500 | Email 30@paulkelly.co.nz  
30 Moorhouse Avenue, Addington, Christchurch 8011  
www.paulkelly.co.nz