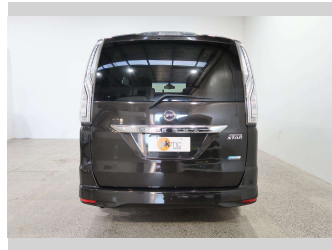
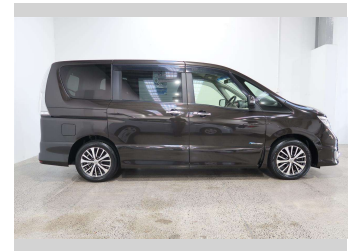
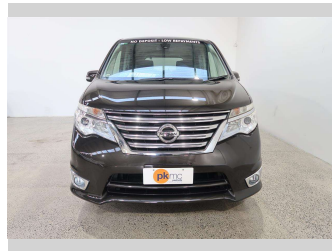


2014 Nissan Serena HIGHWAY ST



Purchase Price **\$13,990**

Includes GST
Excludes on-road costs of \$550

Finance may be available on this vehicle. Ask one of our friendly staff for more information.

Gain peace of mind with Mechanical Breakdown Insurance. **Ask us how.**

- Top features**
- » 8 Seater
 - » Air Conditioning
 - » Alloy Wheels
 - » Anti Lock Braking Syst...
 - » Body Kit (Factory)
 - » Central Locking
 - » Central Locking
 - » Child seat anchor poin...
 - » Climate Control
 - » Cruise Control
 - » Digital Display
 - » Electric Mirrors
 - » Electric Mirrors (Retr...
 - » Factory Alloy Wheels
 - » Power Steer
 - » Power Windows
 - » Radio
 - » Rear Wiper

Body Style
5 door, Van

Odometer
116,340 km

Engine
2000 cc, Hybrid

Fuel Type
Hybrid

Transmission
Automatic, Front Wheel

Wheels
-

VIN
7AT0DH3FX24228153

Interior
Black, Cloth



Based on 2023 VSRR rating

Reg No.
-

Ext Colour
Brown

History
-

Seats
7 seats

CO2 Emissions
★★★★☆
171 grams/km

Energy Economy
★★★★☆☆
Annual fuel cost of \$2,860
7.3L per 100km

Cost per year is an estimate based on petrol price of \$2.80 per litre and an average distance of 14000 km. Emissions and Energy Economy figures standardised to 3P WLTP.

Stock ID: 4351



Paul Kelly Motor Company | Phone 03 377 8500 | Email 30@paulkelly.co.nz
30 Moorhouse Avenue, Addington, Christchurch 8011
www.paulkelly.co.nz