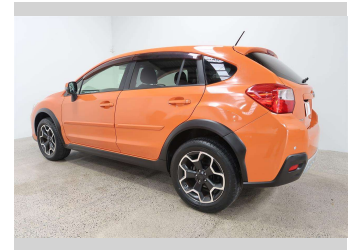
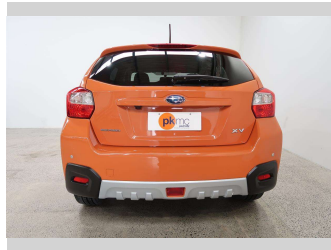
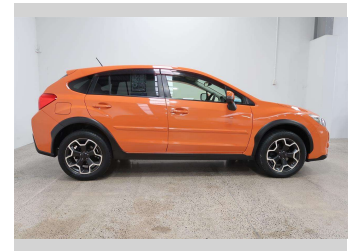
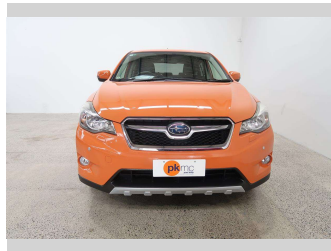


2013 Subaru XV 2.0I-4WD



Purchase Price **\$16,990**

Includes GST
Excludes on-road costs of \$550

Finance may be available on this vehicle. Ask one of our friendly staff for more information.

Gain peace of mind with Mechanical Breakdown Insurance. **Ask us how.**

- Top features**
- » Air Bag
 - » Air Conditioning
 - » Anti Lock Braking Syst...
 - » Auto Lights
 - » CD Player
 - » Central Locking
 - » Climate Control
 - » Cruise Control
 - » Electric Mirrors (Retr...
 - » Factory Alloy Wheels
 - » Fog Lights
 - » Parking Sensors
 - » Power Steer
 - » Power Windows
 - » Push Button Start
 - » Radio
 - » Rear Wiper
 - » Reversing Camera

Body Style
5 door, SUV / 4x4

Odometer
73,106 km

Engine
2000 cc, Internal Combustion

Fuel Type
Petrol

Transmission
Automatic, All Wheel Drive

Wheels
Factory Alloys

VIN
7AT0GF1XX24051964

Interior
-

Safety



Based on 2023 UCSR rating for 12-16 models

Reg No.
-

Ext Colour
Orange

History
-

Seats
5 seats

CO2 Emissions
★★★★☆
163 grams/km

Energy Economy
★★★☆☆☆☆
Annual fuel cost of \$2,740
7L per 100km

Cost per year is an estimate based on petrol price of \$2.80 per litre and an average distance of 14000 km. Emissions and Energy Economy figures standardised to 3P WLTP.

Stock ID: 4569



Paul Kelly Motor Company | Phone 03 377 8500 | Email 30@paulkelly.co.nz
30 Moorhouse Avenue, Addington, Christchurch 8011
www.paulkelly.co.nz