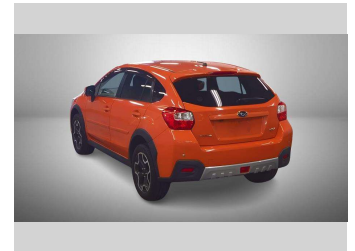


# 2013 Subaru XV 2.0I-4WD



Purchase Price

**\$16,990**

Includes GST  
Excludes on-road costs of \$550

Finance may be available on this vehicle. Ask one of our friendly staff for more information.

Gain peace of mind with Mechanical Breakdown Insurance. **Ask us how.**

## Top features

- » Anti Lock Braking System
- » Central Locking
- » Climate Control
- » Cruise Control
- » Factory Alloy Wheels
- » Power Steer
- » Power Windows
- » Sun Roof

Body Style

**Station Wagon**

Odometer

**73,106 km**

Engine

**2000 cc**

Fuel Type

**Petrol**

Transmission

**Automatic**

Wheels

-

VIN

**7AT0GF1XX24051964**

Interior

-

Safety



Based on 2023 UCSR rating for 12-16 models

Reg No.

-

Ext Colour

**Orange**

History

-

Seats

-

CO2 Emissions

★★★★★☆☆

**163 grams/km**

Energy Economy

★★★☆☆☆☆

**Annual fuel cost of \$2,740  
7L per 100km**

Cost per year is an estimate based on petrol price of \$2.80 per litre and an average distance of 14000 km. Emissions and Energy Economy figures standardised to 3P WLTP.

**Stock ID: 4569**



Paul Kelly Motor Company | Phone 03 377 8500 | Email 30@paulkelly.co.nz  
30 Moorhouse Avenue, Addington, Christchurch 8011  
www.paulkelly.co.nz