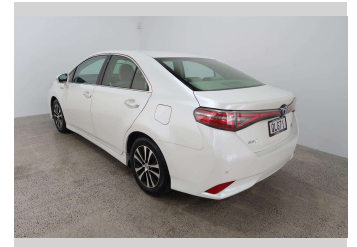


2013 Toyota SAI Hybrid



Purchase Price

\$13,990

Includes GST, Registration & Licensing

Finance may be available on this vehicle. Ask one of our friendly staff for more information.

Gain peace of mind with Mechanical Breakdown Insurance. **Ask us how.**

Top features

- » ABS Braking
- » Air Bag x 6
- » Air Conditioning
- » Central Locking
- » Child seat anchor poin...
- » Climate Control
- » Cruise Control
- » Electric Mirrors (Retr...
- » Factory Alloy Wheels
- » Power Steer
- » Power Windows
- » Push Button Start
- » Radio
- » Remote Lock
- » Reversing Camera
- » Smart Key
- » Steering Wheel Control...

Body Style

5 door, Sedan

Odometer

87,500 km

Engine

2400 cc, Internal Combustion

Fuel Type

Hybrid

Transmission

Automatic

Wheels

-

VIN

7AT0H661X23063496

Interior

Beige

Safety



Based on 2023 VSRR rating

Reg No.

QLG71

Ext Colour

White

History

-

Seats

5 seats, Fabric

CO2 Emissions

★★★★☆

126 grams/km

Energy Economy

★★★★☆☆

Annual fuel cost of \$2,120

5.4L per 100km

Cost per year is an estimate based on petrol price of \$2.80 per litre and an average distance of 14000 km. Emissions and Energy Economy figures standardised to 3P WLTP.

Stock ID: 4764



Paul Kelly Motor Company - 4WD | Phone 03 365 9204 | Email 85@paulkelly.co.nz
85 Moorhouse Avenue, Addington, Christchurch 8011, New Zealand
www.paulkelly.co.nz