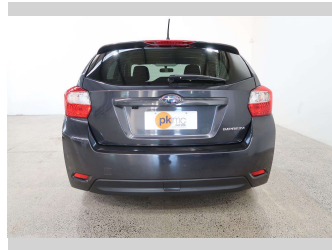
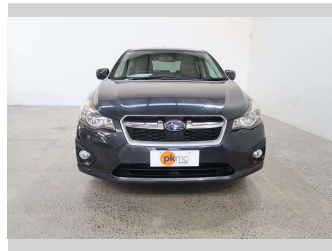


2014 Subaru Impreza 1.6I-L



Purchase Price **\$11,990**

Includes GST
Excludes on-road costs of \$550

Finance may be available on this vehicle. Ask one of our friendly staff for more information.

Gain peace of mind with Mechanical Breakdown Insurance. **Ask us how.**

- Top features**
- » ABS Braking
 - » ABS Braking w/ EBD
 - » Alloy Wheels
 - » Anti Lock Braking Syst...
 - » Central Locking
 - » Central Locking
 - » Child seat anchor poin...
 - » Climate Control
 - » Electronic Fuel Inject...
 - » ESC
 - » Power Steer
 - » Power Windows
 - » Push Button Start
 - » Radio
 - » Rear Wiper
 - » Remote Lock
 - » Reversing Camera
 - » Spot Lights

Body Style
5 door, Hatchback

Odometer
83,000 km

Engine
1600 cc, Internal Combustion

Fuel Type
Petrol

Transmission
Automatic, Front Wheel

Wheels
-

VIN
7AT0GF09X24020506

Interior
Black, Cloth

Safety



Based on 2023 UCSR rating for 12-16 models

Reg No.
-

Ext Colour
Grey

History
-

Seats
5 seats, Cloth

CO2 Emissions
★★★★☆
153 grams/km

Energy Economy
★★★★☆☆

Annual fuel cost of \$2,590
6.6L per 100km

Cost per year is an estimate based on petrol price of \$2.80 per litre and an average distance of 14000 km. Emissions and Energy Economy figures standardised to 3P WLTP.

Stock ID: 4487



Paul Kelly Motor Company | Phone 03 377 8500 | Email 30@paulkelly.co.nz
30 Moorhouse Avenue, Addington, Christchurch 8011
www.paulkelly.co.nz