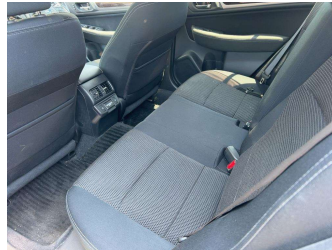
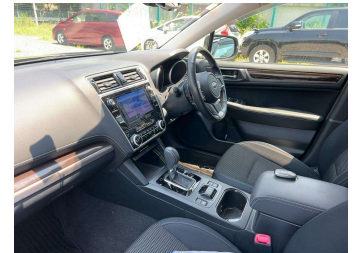
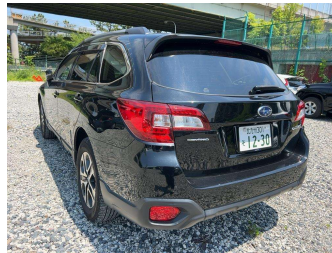


# 2018 Subaru Outback 2.5L AWD



Purchase Price

**\$25,990**

Includes GST  
Excludes on-road costs of \$550

Finance may be available on this vehicle. Ask one of our friendly staff for more information.

Gain peace of mind with Mechanical Breakdown Insurance. **Ask us how.**

## Top features

» Cruise Control

Body Style

**Station Wagon**

Odometer

**72,000 km**

Engine

**2500 cc, Internal Combustion**

Fuel Type

**Petrol**

Transmission

**Automatic**

Wheels

-

VIN

**7AT0GF16X24047842**

Interior

**Charcoal, Cloth**

Safety



Based on 2023 VSRR rating

Reg No.

-

Ext Colour

**Black**

History

**Ex-Overseas**

Seats

-

CO2 Emissions

★★★★★☆☆

**177 grams/km**

Energy Economy

★★★☆☆☆☆

**Annual fuel cost of \$2,980**

**7.6L per 100km**

Cost per year is an estimate based on petrol price of \$2.80 per litre and an average distance of 14000 km. Emissions and Energy Economy figures standardised to 3P WLTP.

**Stock ID: 4625**



Paul Kelly Motor Company - 4WD | Phone 03 365 9204 | Email 85@paulkelly.co.nz  
85 Moorhouse Avenue, Addington, Christchurch 8011, New Zealand  
www.paulkelly.co.nz