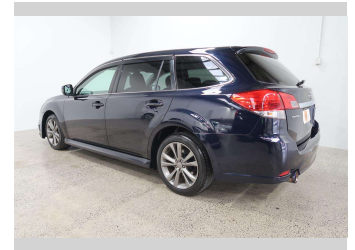
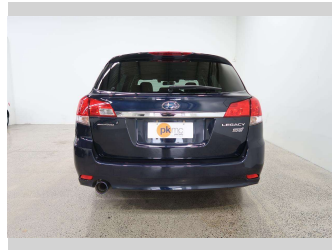
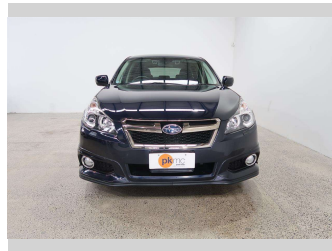


2013 Subaru LEGACY TOURING WAGON 2.5i B-Sport



Purchase Price **\$11,990**

Includes GST
Excludes on-road costs of \$550

Finance may be available on this vehicle. Ask one of our friendly staff for more information.

Gain peace of mind with Mechanical Breakdown Insurance. **Ask us how.**

- Top features**
- » 4 Wheel Drive
 - » ABS Braking
 - » Air Con
 - » Auto Lights
 - » CD Player
 - » Electric Mirrors
 - » ESC
 - » Paddle Shift
 - » Power Steer
 - » Power Windows
 - » Radar Cruise Control
 - » Radio
 - » Smart Key
 - » Steering Wheel Control...
 - » Traction Control

Body Style
Station Wagon

Odometer
114,799 km

Engine
2500 cc

Fuel Type
Petrol


Transmission
Automatic, 4WD

Wheels
-

VIN
-

Interior
Black, Cloth

Safety



Based on 2023 UCSR rating for 09-14 models

Reg No.
-

Ext Colour
Blue

History
-

Seats
5 seats, Cloth

CO2 Emissions
★★★★☆
181 grams/km

Energy Economy
★★☆☆☆
Annual fuel cost of \$3,020
7.7L per 100km

Cost per year is an estimate based on petrol price of \$2.80 per litre and an average distance of 14000 km. Emissions and Energy Economy figures standardised to 3P WLTP.

Stock ID: 4587