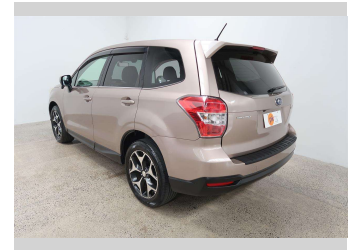
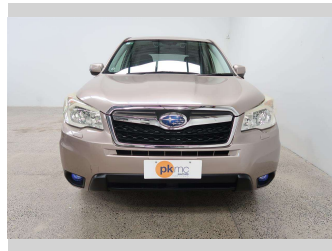


# 2013 Subaru Forester 2.0I-S 4WD



**Purchase Price** **\$15,990**

Includes GST  
Excludes on-road costs of \$550

Finance may be available on this vehicle. Ask one of our friendly staff for more information.

Gain peace of mind with Mechanical Breakdown Insurance. **Ask us how.**

- Top features**
- » 4 Wheel Drive
  - » ABS Braking
  - » Air Bag x 6
  - » Air Conditioning
  - » Bluetooth
  - » CD Player
  - » Central Locking
  - » Central Locking
  - » Child seat anchor poin...
  - » Climate Control
  - » Day Time Lighting
  - » Electric Mirrors (Retr...
  - » Factory Alloy Wheels
  - » Forward Collision Warn...
  - » Heated Seats
  - » Lane Departure Warning
  - » Lane Departure Warning
  - » Paddle Shift

Body Style  
**5 door, Station Wagon**

Odometer  
**114,530 km**

Engine  
**2000 cc, Internal Combustion**

Fuel Type  
**Petrol**

Transmission  
**Automatic, All Wheel Drive**

Wheels  
-

VIN  
**7AT0GF17X24010337**

Interior  
**Black**

Safety



Based on 2023 UCSR rating for 12-18 models

Reg No.  
-

Ext Colour  
**Beige**

History  
-

Seats  
**5 seats, Leather**

CO2 Emissions  
**★★★★☆**  
**173 grams/km**

Energy Economy  
**★★★★☆☆**  
**Annual fuel cost of \$2,900**  
**7.4L per 100km**

Cost per year is an estimate based on petrol price of \$2.80 per litre and an average distance of 14000 km. Emissions and Energy Economy figures standardised to 3P WLTP.

**Stock ID: 4823**



Paul Kelly Motor Company | Phone 03 377 8500 | Email 30@paulkelly.co.nz  
30 Moorhouse Avenue, Addington, Christchurch 8011  
www.paulkelly.co.nz