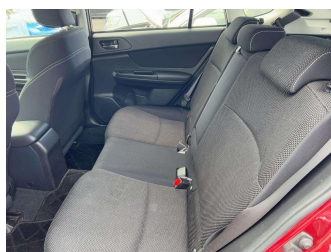
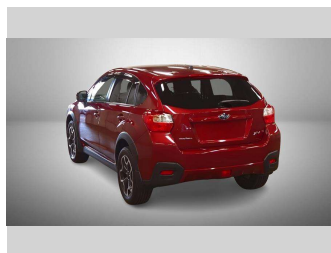


# 2013 Subaru Impreza XV 2.0I-L EYESIGHT



**Purchase Price** **\$15,990**  
Includes GST  
 Excludes on-road costs of \$550

Finance may be available on this vehicle. Ask one of our friendly staff for more information.

Gain peace of mind with Mechanical Breakdown Insurance. **Ask us how.**

**Top features**  
 None Listed

Body Style  
**5 door, Station Wagon**

Odometer  
**56,000 km**

Engine  
**2000 cc**

Fuel Type  
**Petrol**

Transmission  
**Automatic**

Wheels  
 -

VIN  
**7AT0GF1XX24048256**

Interior  
**Black**

Safety



Based on 2023 UCSR rating for 12-16 models

Reg No.

-

Ext Colour

**Red**

History

-

Seats

**5 seats**

CO2 Emissions

★★★★☆

**163 grams/km**

Energy Economy

★★☆☆☆

**Annual fuel cost of \$2,740  
 7L per 100km**

Cost per year is an estimate based on petrol price of \$2.80 per litre and an average distance of 14000 km. Emissions and Energy Economy figures standardised to 3P WLTP.

**Stock ID: 4591**



Paul Kelly Motor Company | Phone 03 377 8500 | Email 30@paulkelly.co.nz  
 30 Moorhouse Avenue, Addington, Christchurch 8011  
 www.paulkelly.co.nz