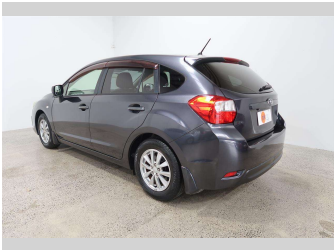
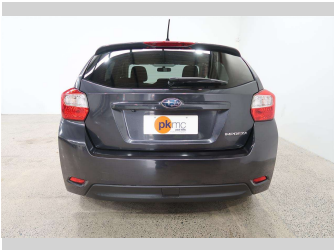
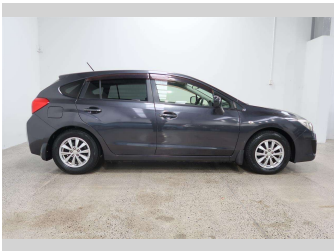
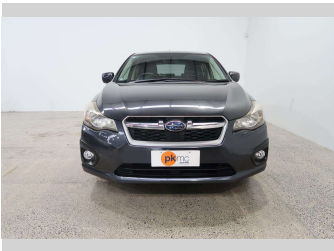


2012 Subaru Impreza Sport 1.6i-L



Purchase Price

\$11,990

Includes GST
Excludes on-road costs of \$550

Finance may be available on this vehicle. Ask one of our friendly staff for more information.

Gain peace of mind with Mechanical Breakdown Insurance. **Ask us how.**

Top features

- » ABS Braking
- » Air Conditioning
- » CD Player
- » Central Locking
- » Child seat anchor poin...
- » Climate Control
- » Electric Mirrors (Retr...
- » Factory Alloy Wheels
- » Power Steer
- » Power Windows
- » Push Button Start
- » Radio
- » Rear Wiper
- » Remote Lock
- » Reversing Camera
- » Smart Key
- » Traction Control

Body Style

5 door, Hatchback

Odometer

72,000 km

Engine

1600 cc, Internal Combustion

Fuel Type

Petrol

Transmission

Automatic

Wheels

-

VIN

7AT0GF09X24005890

Interior

Charcoal

Safety



Based on 2023 UCSR rating for 12-16 models

Reg No.

-

Ext Colour

Gray

History

-

Seats

5 seats, Cloth

CO2 Emissions

★★★★☆

153 grams/km

Energy Economy

★★★★☆☆

**Annual fuel cost of \$2,590
6.6L per 100km**

Cost per year is an estimate based on petrol price of \$2.80 per litre and an average distance of 14000 km. Emissions and Energy Economy figures standardised to 3P WLTP.

Stock ID: 4662



Paul Kelly Motor Company | Phone 03 377 8500 | Email 30@paulkelly.co.nz
30 Moorhouse Avenue, Addington, Christchurch 8011
www.paulkelly.co.nz