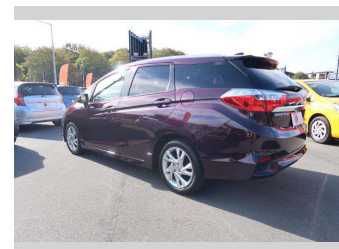
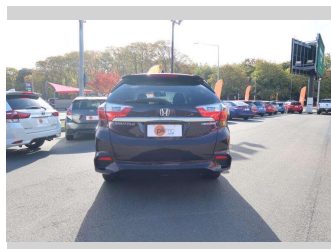


2015 Honda Fit SHUTTLE HY



Purchase Price **\$15,990**

Includes GST
Excludes on-road costs of \$550

Finance may be available on this vehicle. Ask one of our friendly staff for more information.

Gain peace of mind with Mechanical Breakdown Insurance. **Ask us how.**

- Top features**
- » Air Bag x 8
 - » Air Conditioning
 - » Anti Lock Braking Syst...
 - » Central Locking
 - » Central Locking
 - » Child seat anchor poin...
 - » Climate Control
 - » Cruise Control
 - » Factory Alloy Wheels
 - » Fog Lights
 - » Power Steer
 - » Power Windows
 - » Rear Wiper
 - » Remote Lock
 - » Reversing Camera
 - » Traction Control

Body Style
5 door, Station Wagon

Odometer
73,850 km

Engine
1500 cc, Hybrid

Fuel Type
Hybrid

Transmission
Automatic, Front Wheel

Wheels
-

VIN
7AT08G2YX24008137

Interior
Black, Leather / Alcantara

Safety



Based on 2023 VSRR rating

Reg No.
-

Ext Colour
Wine

History
-

Seats
7 seats, Leather / Alcantara

CO2 Emissions
★★★★☆
100 grams/km

Energy Economy
★★★★☆☆
Annual fuel cost of \$1,690
4.3L per 100km

Cost per year is an estimate based on petrol price of \$2.80 per litre and an average distance of 14000 km. Emissions and Energy Economy figures standardised to 3P WLTP.

Stock ID: 4339



Paul Kelly Motor Company | Phone 03 377 8500 | Email 30@paulkelly.co.nz
30 Moorhouse Avenue, Addington, Christchurch 8011
www.paulkelly.co.nz