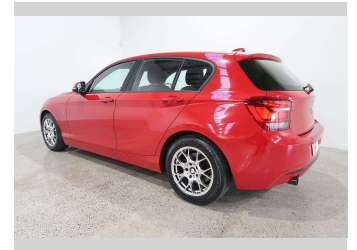
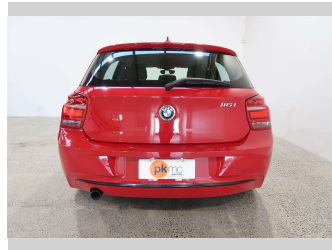
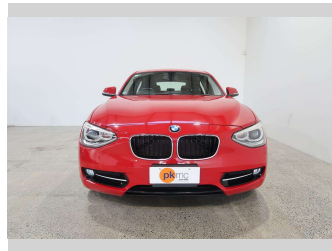


# 2012 BMW 116i Twin Turbo



Purchase Price

**\$11,990**

Includes GST  
Excludes on-road costs of \$550

Finance may be available on this vehicle. Ask one of our friendly staff for more information.

Gain peace of mind with Mechanical Breakdown Insurance. **Ask us how.**

## Top features

- » ABS Braking
- » Air Bag x 6
- » Air Conditioning
- » Alloy Wheels
- » Anti Lock Braking Syst...
- » Auto Lights
- » Central Locking
- » Central Locking
- » Child seat anchor poin...
- » Climate Control
- » Cruise Control
- » Electronic Fuel Inject...
- » Power Steer
- » Power Windows
- » Push Button Start
- » Radio
- » Rear Wiper
- » Remote Lock

Body Style

**5 door, Hatchback**

Odometer

**71,809 km**

Engine

**1600 cc, Internal Combustion**

Fuel Type

**Petrol**

Transmission

**Automatic, Rear Wheel**

Wheels

-

VIN

-

Interior

**Black, Cloth**

Safety

-

Reg No.

-

Ext Colour

**Red**

History

-

Seats

**5 seats, Cloth**

CO2 Emissions

-

Energy Economy

-

**Stock ID: 4450**



Paul Kelly Motor Company | Phone 03 377 8500 | Email 30@paulkelly.co.nz  
30 Moorhouse Avenue, Addington, Christchurch 8011  
www.paulkelly.co.nz