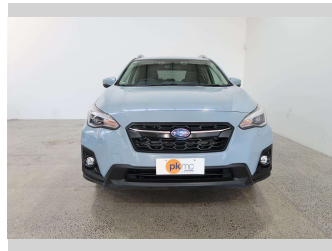


# 2020 Subaru XV 2.0E-S HYB



**Purchase Price** **\$24,990**

Includes GST  
Excludes on-road costs of \$550

Finance may be available on this vehicle. Ask one of our friendly staff for more information.

Gain peace of mind with Mechanical Breakdown Insurance. **Ask us how.**

- Top features**
- » 4 Wheel Drive
  - » Air Bag x 4
  - » Air Bag x 6
  - » Air Conditioning
  - » Anti Lock Braking Syst...
  - » Bluetooth
  - » CD Player
  - » Central Locking
  - » Central Locking
  - » Child seat anchor poin...
  - » Climate Control
  - » Cruise Control
  - » Electric Mirrors
  - » Electric Mirrors (Retr...
  - » Face Lift Model
  - » Factory Alloy Wheels
  - » Forward Collision Warn...
  - » Lane Departure Warning

Body Style  
**5 door, SUV**

Odometer  
**109,720 km**

Engine  
**2000 cc**

Fuel Type  
**Hybrid**

Transmission  
**Automatic**

Wheels  
**Factory Alloys**

VIN  
**7AT0GF1XX24022680**

Interior  
**Charcoal**

Safety



Based on 2023 UCSR rating for 16-21 models

Reg No.  
-

Ext Colour  
**Blue**

History  
-

Seats  
**5 seats, Half Leather / Cloth**

CO2 Emissions  
**★★★★☆**  
**155 grams/km**

Energy Economy  
**★★★★☆☆**  
**Annual fuel cost of \$2,630**  
**6.7L per 100km**

Cost per year is an estimate based on petrol price of \$2.80 per litre and an average distance of 14000 km. Emissions and Energy Economy figures standardised to 3P WLTP.

**Stock ID: 2610**



Paul Kelly Motor Company - 4WD | Phone 03 365 9204 | Email 85@paulkelly.co.nz  
85 Moorhouse Avenue, Addington, Christchurch 8011, New Zealand  
www.paulkelly.co.nz