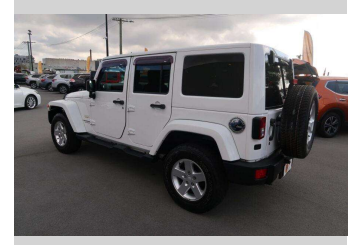
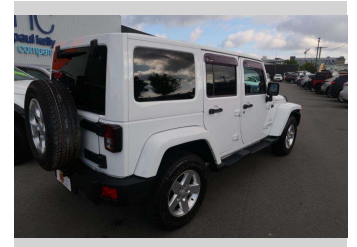


# 2014 Jeep Wrangler UNLIMITED



Purchase Price

**\$37,990**

Includes GST  
Excludes on-road costs of \$550

Finance may be available on this vehicle. Ask one of our friendly staff for more information.

Gain peace of mind with Mechanical Breakdown Insurance. **Ask us how.**

## Top features

- » 4 Wheel Drive
- » Air Bag x 4
- » Air Conditioning
- » Anti Lock Braking Syst...
- » Central Locking
- » Central Locking
- » Climate Control
- » Electric Mirrors
- » Factory Alloy Wheels
- » Power Steer
- » Power Windows
- » Radio
- » Remote Lock
- » Reversing Camera
- » Running Boards
- » Traction Control

Body Style

**5 door, SUV**

Odometer

**99,231 km**

Engine

**3600 cc**

Fuel Type

**Petrol**

Transmission

**Automatic**

Wheels

-

VIN

**1C4HJWLG4DL671719**

Interior

-

Safety



Based on 2023 UCSR rating for 07-18 models

Reg No.

-

Ext Colour

**White**

History

-

Seats

**5 seats, Cloth**

CO2 Emissions

☆☆☆☆☆☆

**304 grams/km**

Energy Economy

☆☆☆☆☆☆

**Annual fuel cost of \$5,100  
13L per 100km**

Cost per year is an estimate based on petrol price of \$2.80 per litre and an average distance of 14000 km. Emissions and Energy Economy figures standardised to 3P WLTP.

**Stock ID: 2563**



Paul Kelly Motor Company - 4WD | Phone 03 365 9204 | Email 85@paulkelly.co.nz  
85 Moorhouse Avenue, Addington, Christchurch 8011, New Zealand  
www.paulkelly.co.nz