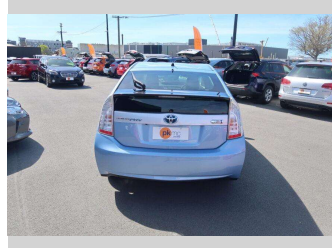


# 2012 Toyota Prius S PHEV



**Purchase Price** **\$15,950**

Includes GST  
Excludes on-road costs of \$550

Finance may be available on this vehicle. Ask one of our friendly staff for more information.

Gain peace of mind with Mechanical Breakdown Insurance. **Ask us how.**

- Top features**
- » Air Bag x 6
  - » Anti Lock Braking Syst...
  - » Central Locking
  - » Central Locking
  - » Climate Control
  - » Electric Mirrors
  - » Factory Alloy Wheels
  - » Heated Seats
  - » Power Steer
  - » Power Windows
  - » Push Button Start
  - » Radio
  - » Reversing Camera
  - » Smart Key
  - » Traction Control

Body Style  
**5 door, Hatchback**

Odometer  
**64,001 km**

Engine  
**1800 cc**

Fuel Type  
**Hybrid**

Transmission  
**Automatic**

Wheels  
-

VIN  
**7AT0H637X23023159**

Interior  
-

Safety



Based on 2023 UCSR rating for 09-16 models

Reg No.

-

Ext Colour  
**Blue**

History

-

Seats  
**5 seats, Cloth**

CO2 Emissions  
**★★★★☆**  
**59 grams/km**

Energy Economy  
**★★★★☆**

**Annual fuel cost not available**  
**2.6L per 100km**

Actual figures and cost per year will vary based on proportion of hybrid mode driving and battery charging schedule. Emissions and Energy Economy figures standardised to 3P WLTP.

**Stock ID: 4128**



Paul Kelly Motor Company | Phone 03 377 8500 | Email 30@paulkelly.co.nz  
30 Moorhouse Avenue, Addington, Christchurch 8011  
www.paulkelly.co.nz